



US009371024B2

(12) **United States Patent**
Ichishi et al.

(10) **Patent No.:** **US 9,371,024 B2**
(45) **Date of Patent:** **Jun. 21, 2016**

(54) **AIR-CONDITIONER FOR VEHICLE**

USPC 165/202
See application file for complete search history.

(71) Applicant: **DENSO CORPORATION**, Kariya,
Aichi-pref. (JP)

(56) **References Cited**

(72) Inventors: **Yoshinori Ichishi**, Kariya (JP); **Yasushi Kondo**, Aichi-gun (JP); **Yoshinori Yanagimachi**, Takahama (JP); **Satoshi Izawa**, Chiryu (JP); **Motohiro Yamaguchi**, Toyokawa (JP)

U.S. PATENT DOCUMENTS

5,537,831 A 7/1996 Isaji et al.
2002/0104324 A1 * 8/2002 Homan B60H 1/00735
62/176.2
2005/0085968 A1 * 4/2005 Panic B60N 2/0244
701/36
2006/0042788 A1 * 3/2006 Naruse B60H 1/00028
165/202

(73) Assignee: **DENSO CORPORATION**, Kariya,
Aichi-pref. (JP)

(Continued)

(*) Notice: Subject to any disclaimer, the term of this patent is extended or adjusted under 35 U.S.C. 154(b) by 603 days.

FOREIGN PATENT DOCUMENTS

(21) Appl. No.: **13/760,372**

JP 62-4006 Y2 1/1987
JP 3-116590 12/1991

(22) Filed: **Feb. 6, 2013**

(Continued)

(65) **Prior Publication Data**

US 2013/0206382 A1 Aug. 15, 2013

OTHER PUBLICATIONS

(30) **Foreign Application Priority Data**

Feb. 13, 2012 (JP) 2012-028632
Feb. 17, 2012 (JP) 2012-033150
Aug. 9, 2012 (JP) 2012-177359

Office Action mailed Aug. 25, 2015 in corresponding JP Application No. 2012-177359 with English translation.

Office Action dated Oct. 21, 2014 in corresponding Japanese Application No. 2012-33150.

Primary Examiner — Marc Norman

Assistant Examiner — Jon T Schermerhorn

(74) *Attorney, Agent, or Firm* — Harness, Dickey & Pierce, P.L.C.

(51) **Int. Cl.**

B60H 1/00 (2006.01)

B60N 2/56 (2006.01)

(57) **ABSTRACT**

(52) **U.S. Cl.**

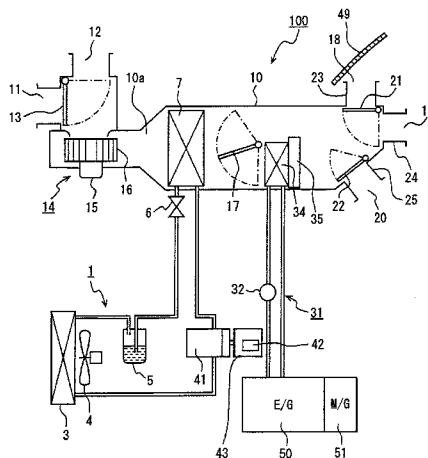
CPC **B60N 2/56** (2013.01); **B60H 1/00285** (2013.01); **B60H 1/00735** (2013.01); **B60N 2/5628** (2013.01); **B60N 2/5635** (2013.01); **B60N 2/5685** (2013.01); **B60N 2/5692** (2013.01)

An air-conditioner conducts an air-conditioning for a passenger compartment of a vehicle, and has an eco-mode to save energy. The air-conditioner includes a seat temperature control system and a controller. The seat temperature control system is configured to operate to heat or cool a seat in the passenger compartment. The controller automatically activates the seat temperature control system when the eco-mode is set.

(58) **Field of Classification Search**

CPC B60N 2/56; B60N 2/5692; B60N 2/5628; B60N 2/5685; B60N 2/5635; B60H 1/00735; B60H 1/00285

15 Claims, 27 Drawing Sheets



(56)

References Cited

FOREIGN PATENT DOCUMENTS

U.S. PATENT DOCUMENTS

2008/0168766 A1 7/2008 Oomura
 2010/0176110 A1 7/2010 Ogino et al.
 2011/0067422 A1 * 3/2011 Ichishi B60H 3/0085
 62/176.1
 2014/0110489 A1 * 4/2014 Yasui B60N 2/0244
 237/5

JP 9-286225 11/1997
 JP 2000-318435 11/2000
 JP 2001-130247 5/2001
 JP 2003-254636 9/2003
 JP 2010-264936 11/2010

* cited by examiner

FIG. 1

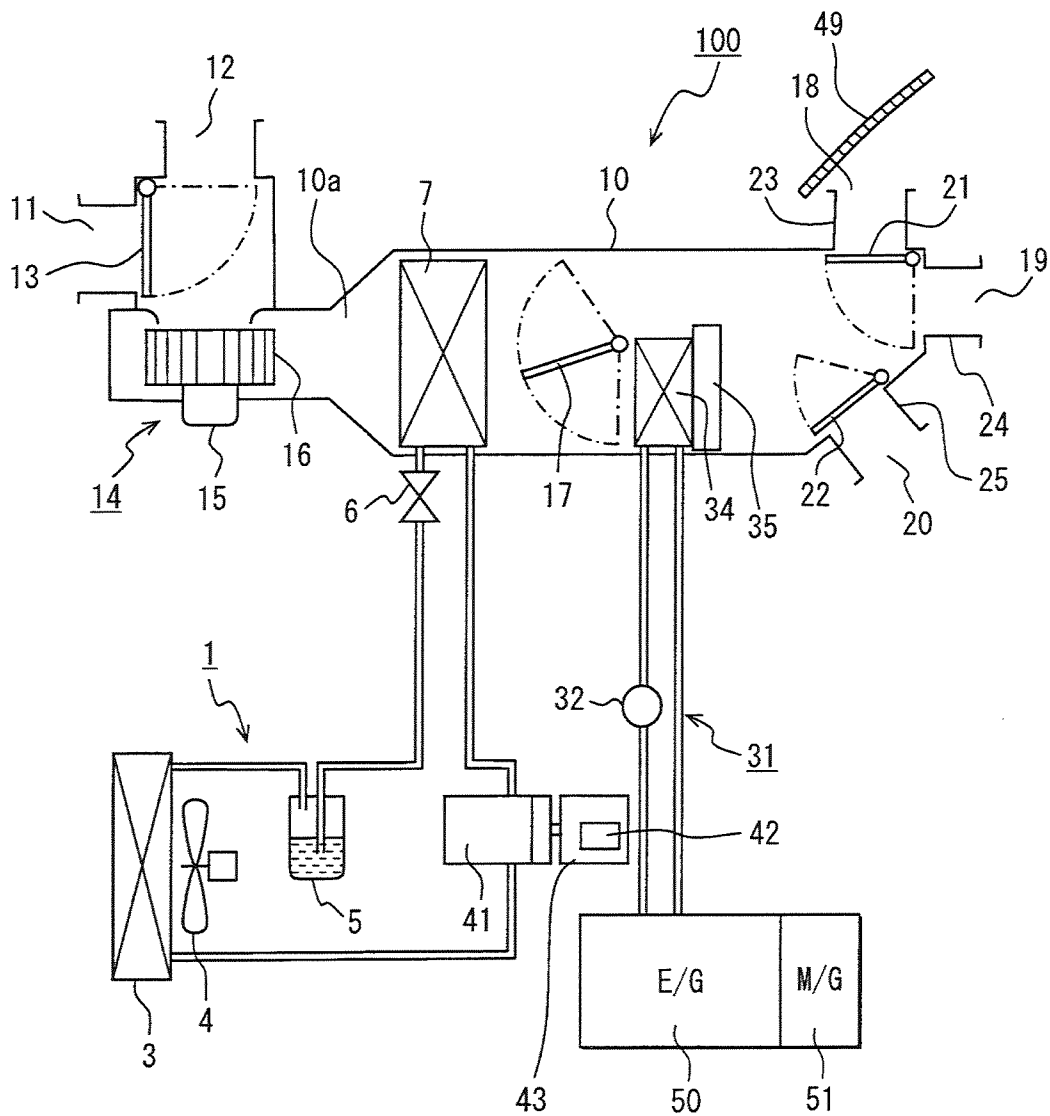


FIG. 2

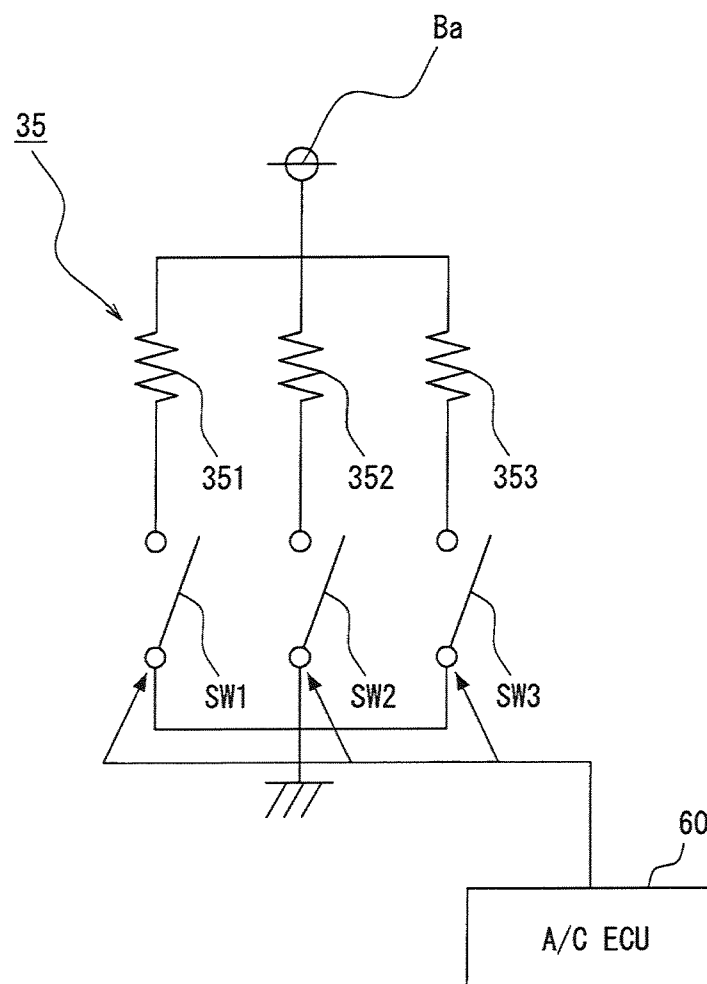


FIG. 3

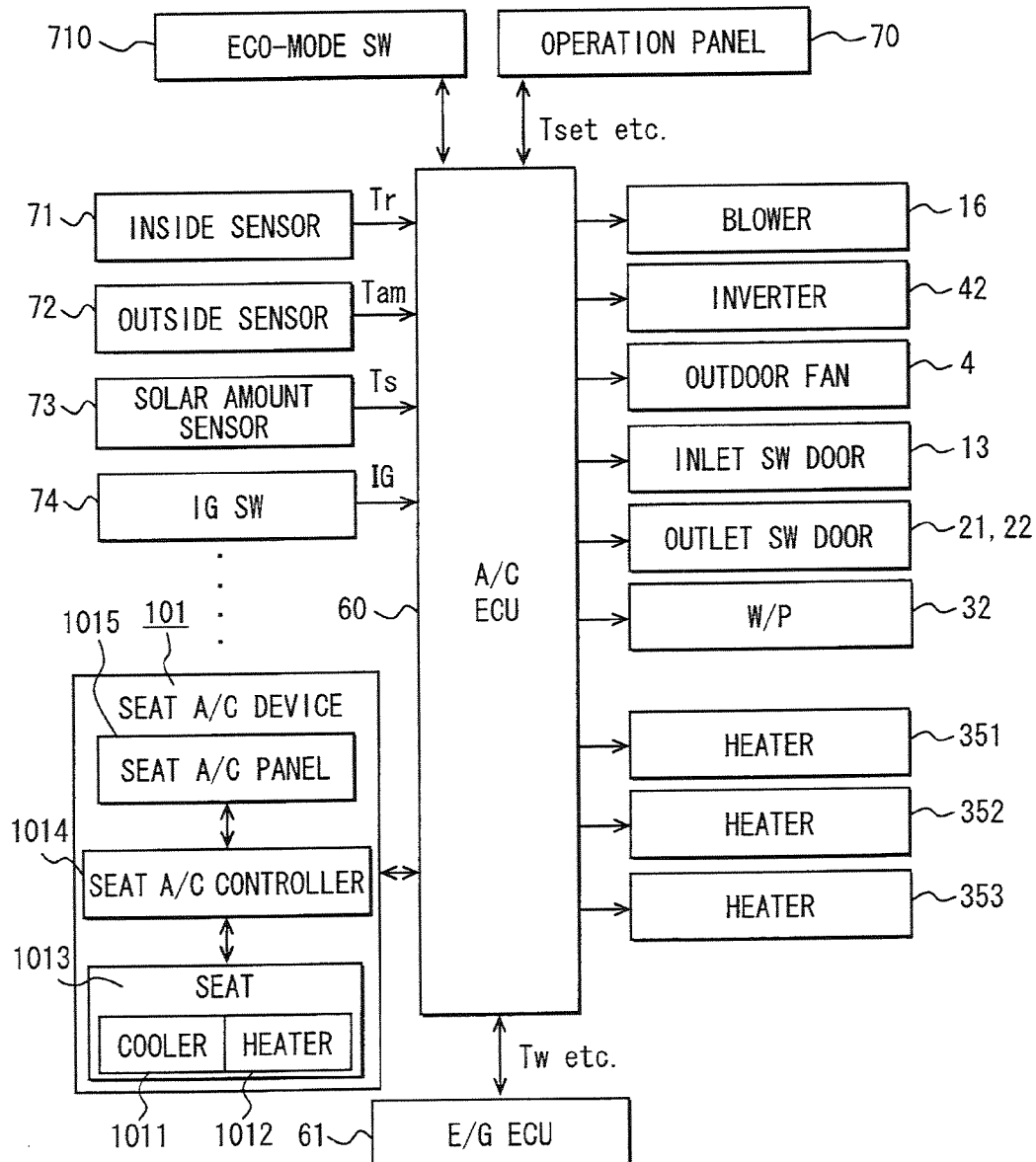


FIG. 4

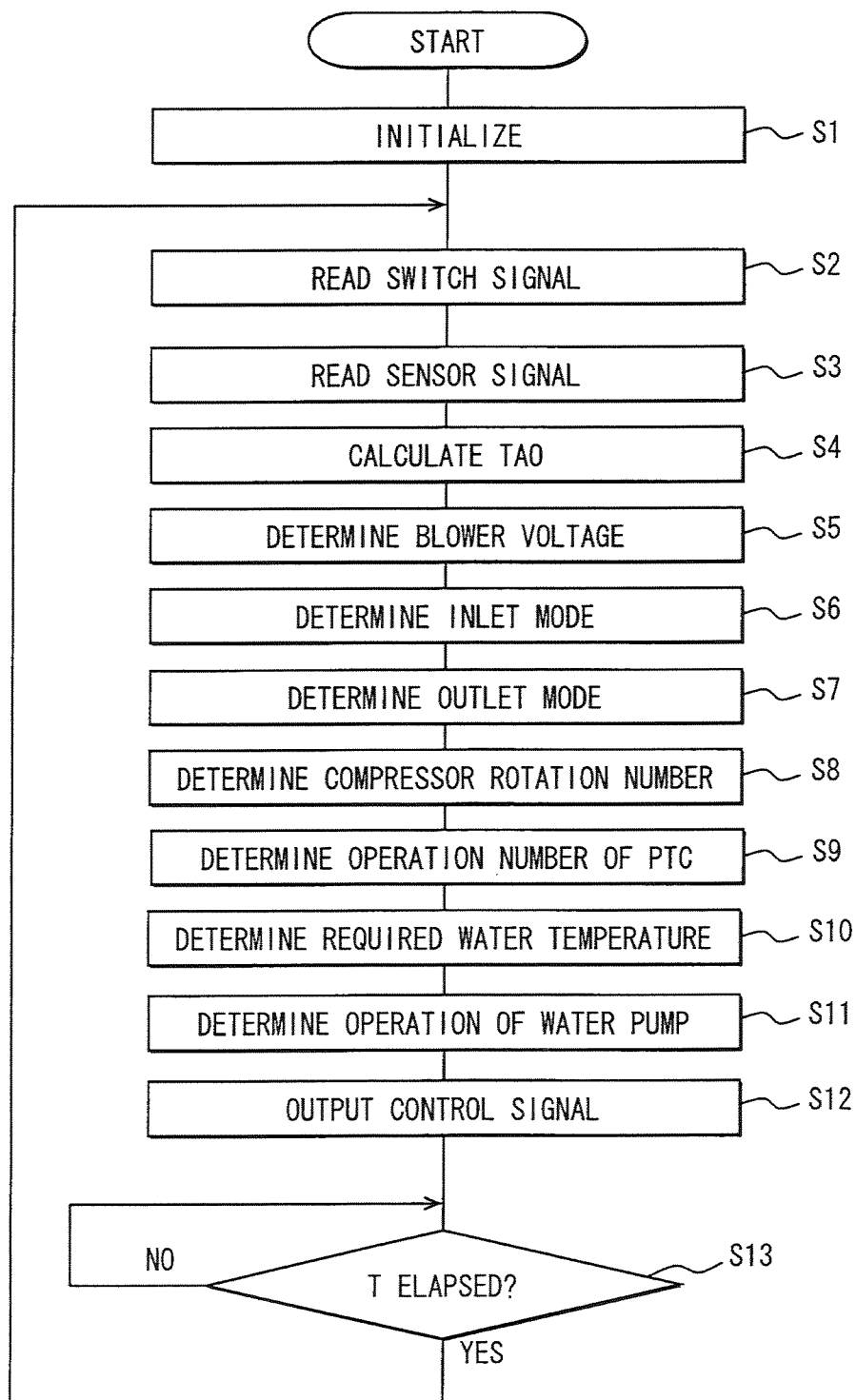


FIG. 5

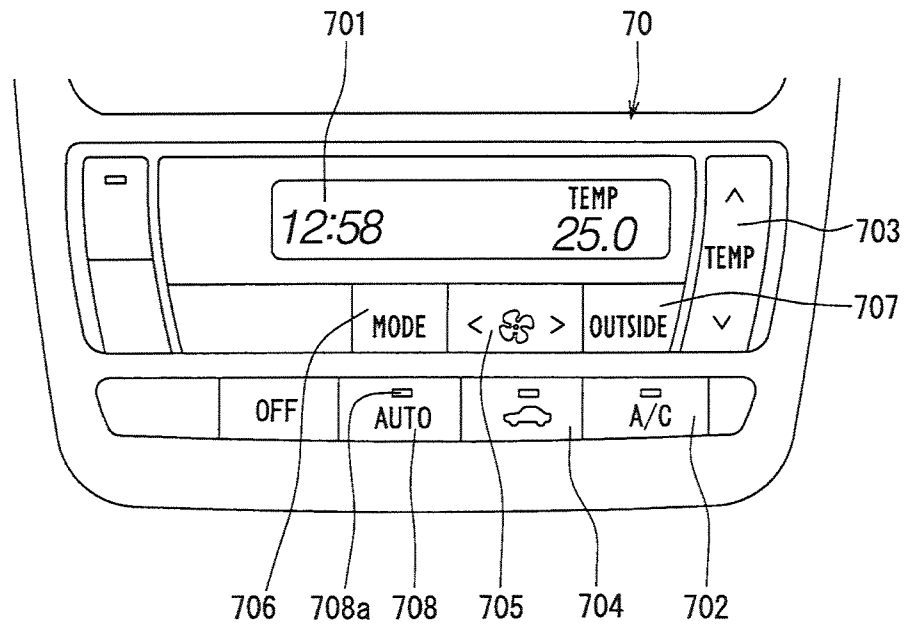


FIG. 6

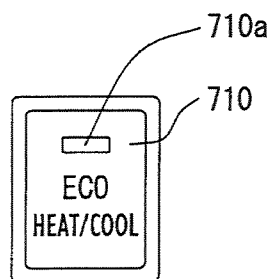


FIG. 7

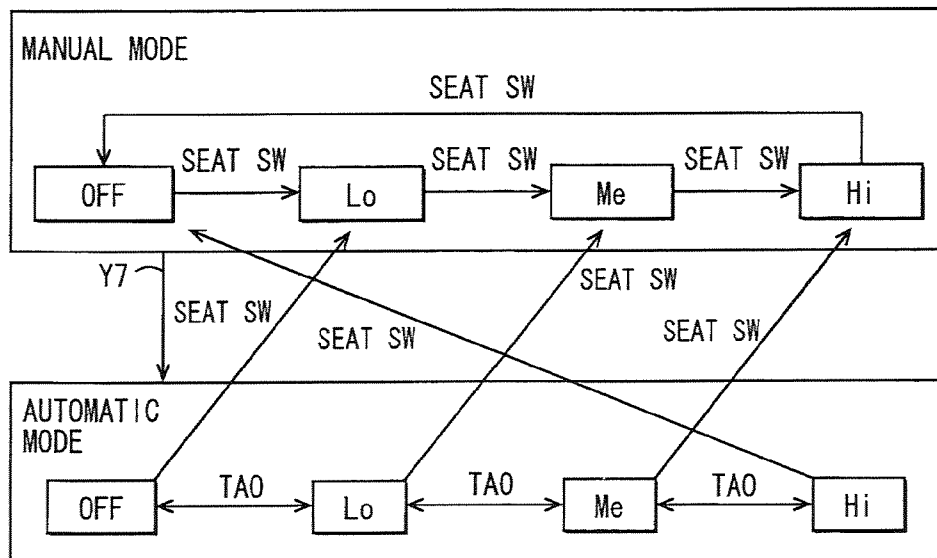


FIG. 8

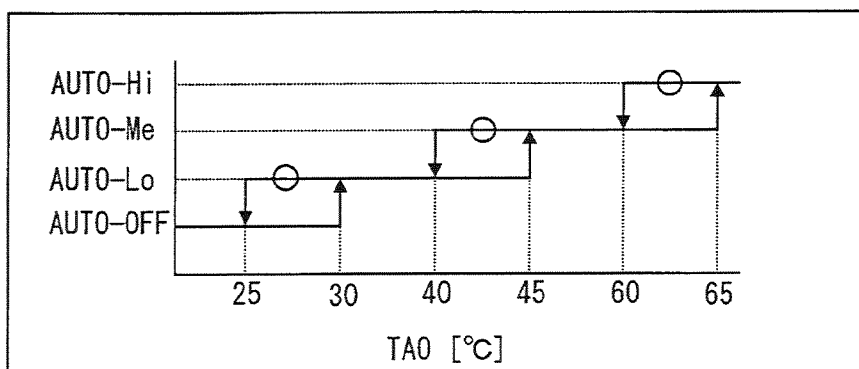


FIG. 9

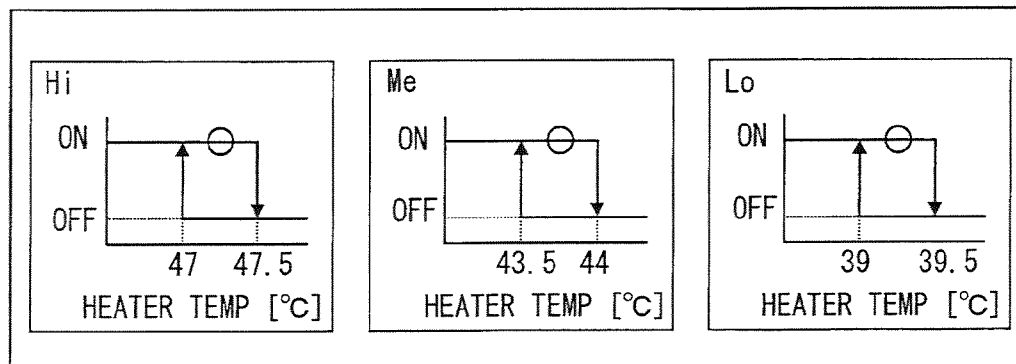


FIG. 10

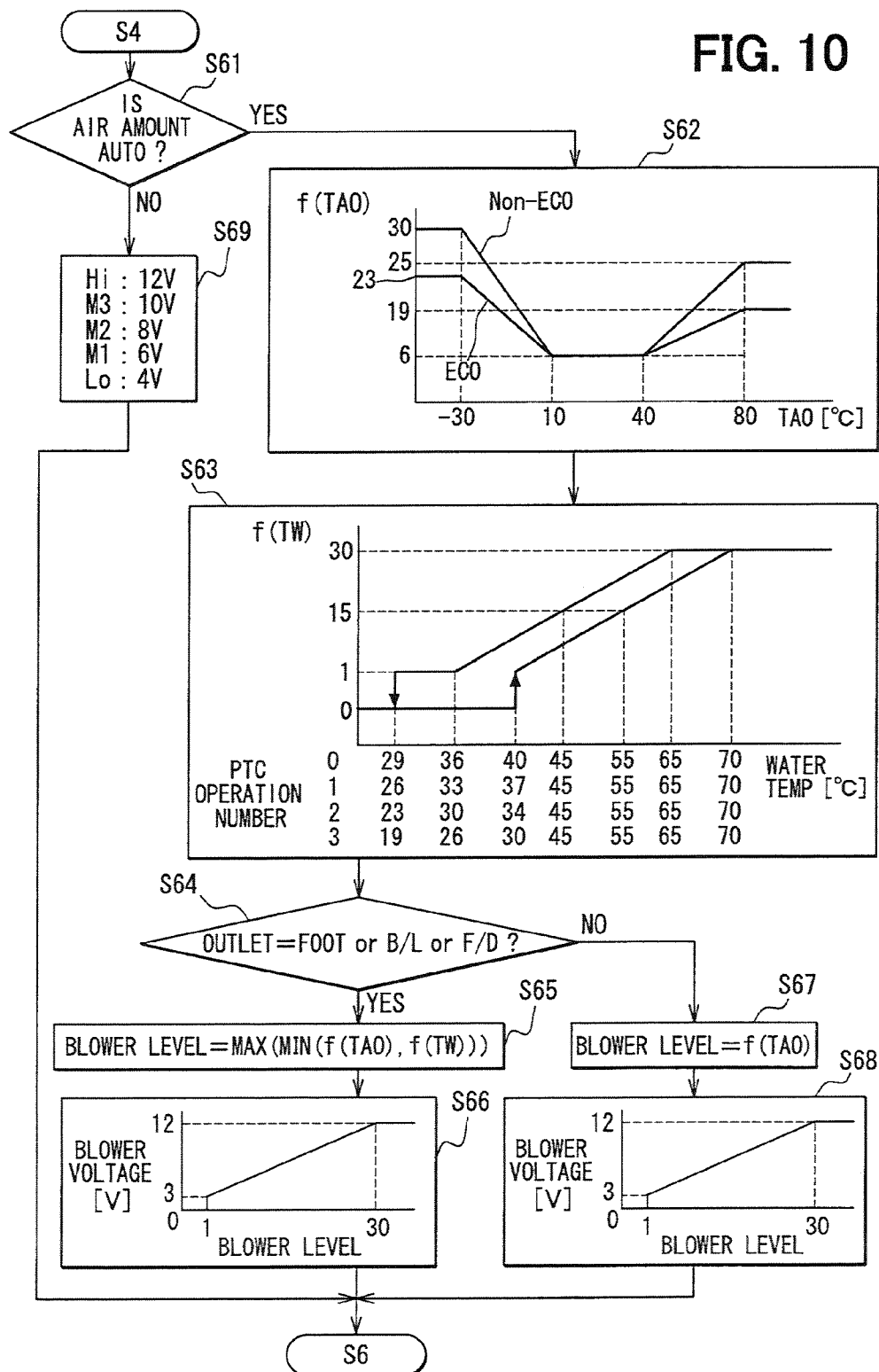


FIG. 11

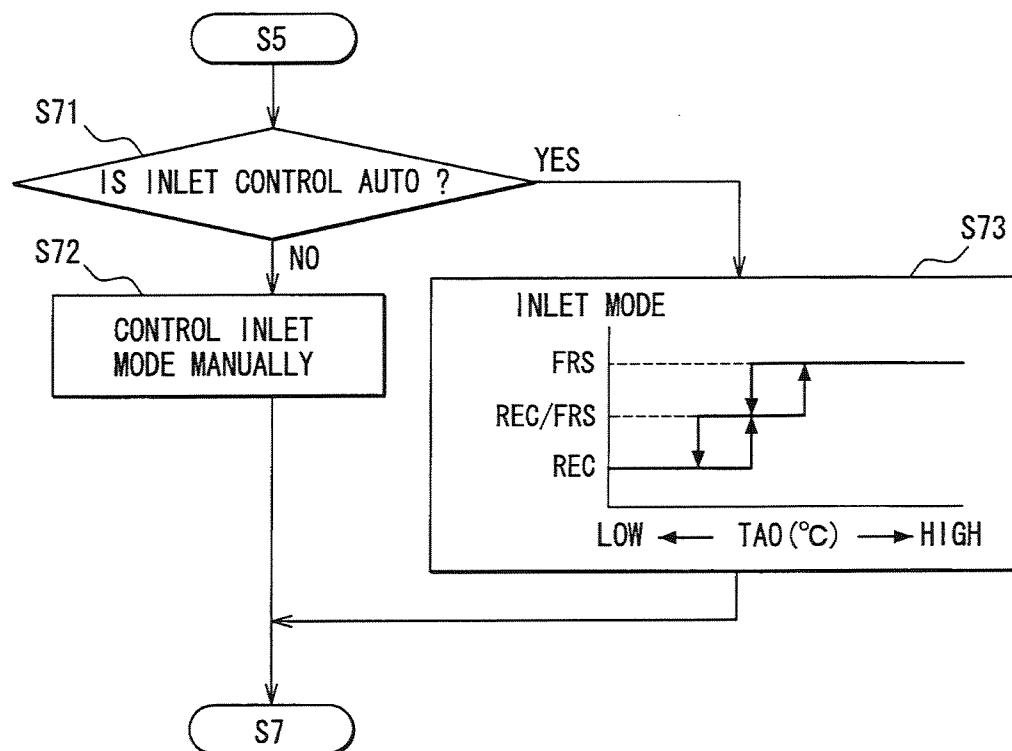


FIG. 12

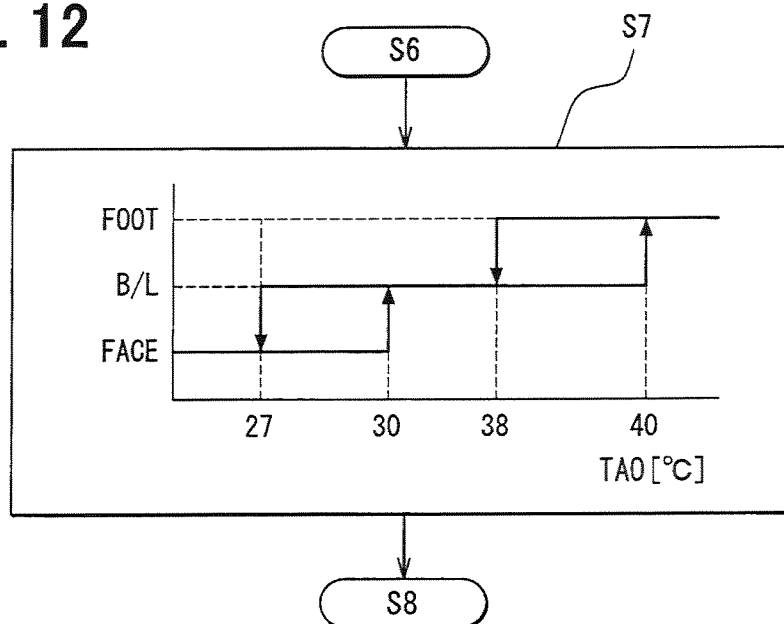


FIG. 13

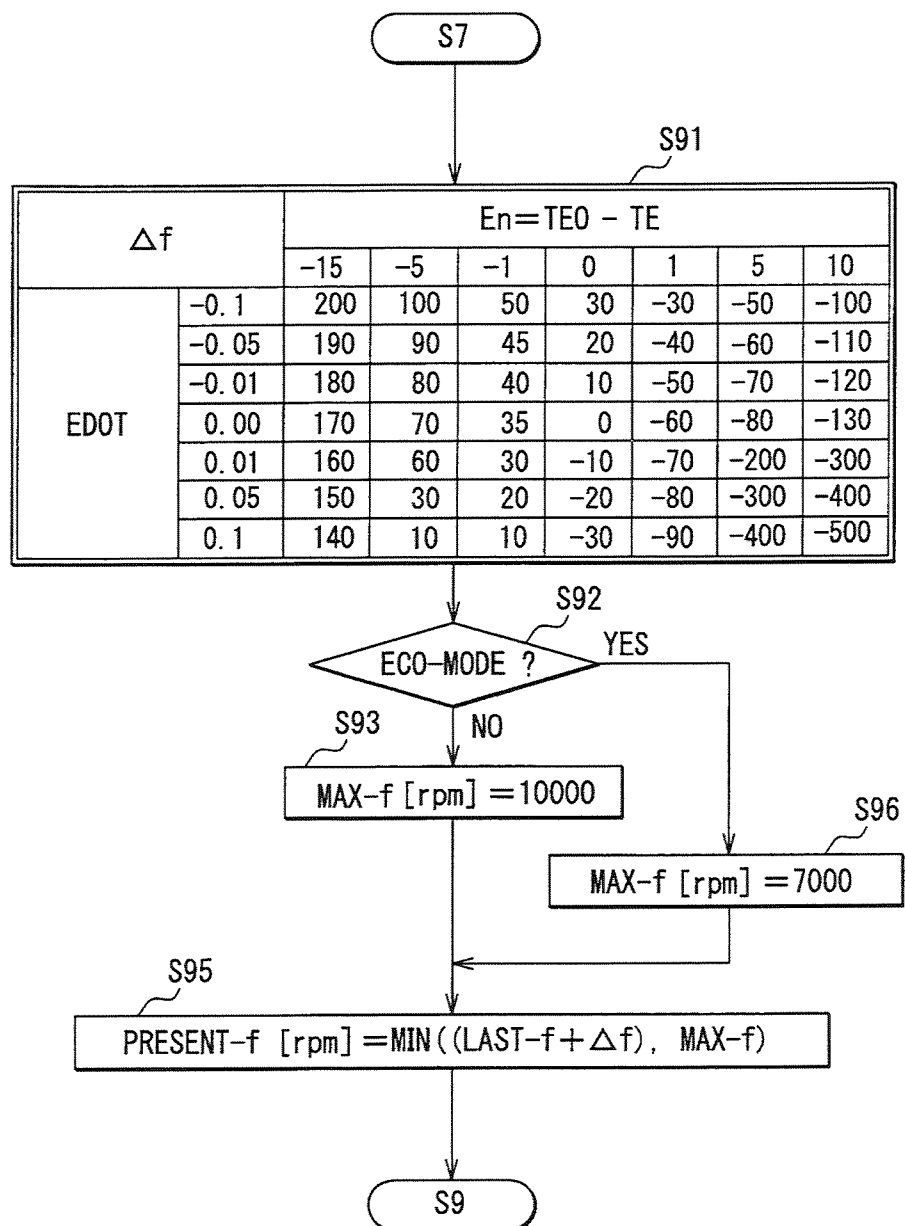


FIG. 14

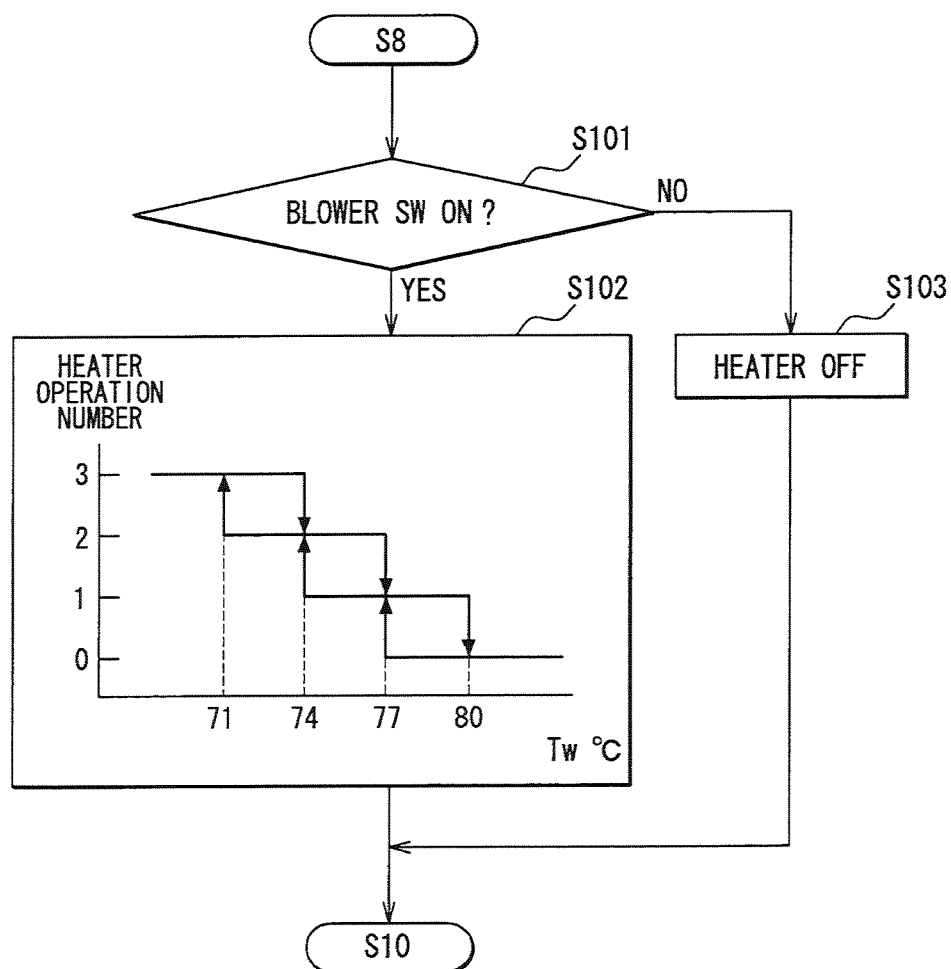


FIG. 15

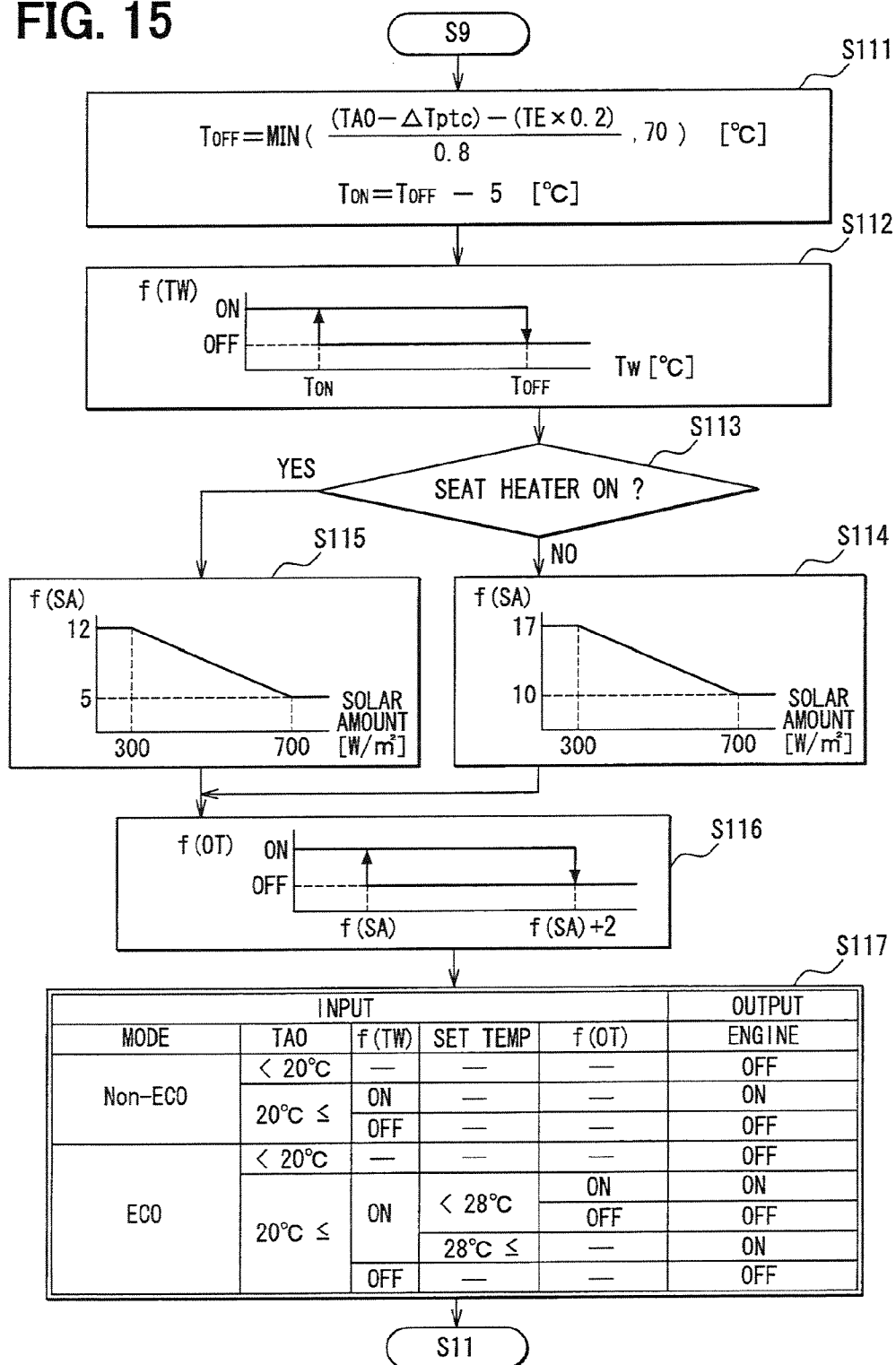


FIG. 16

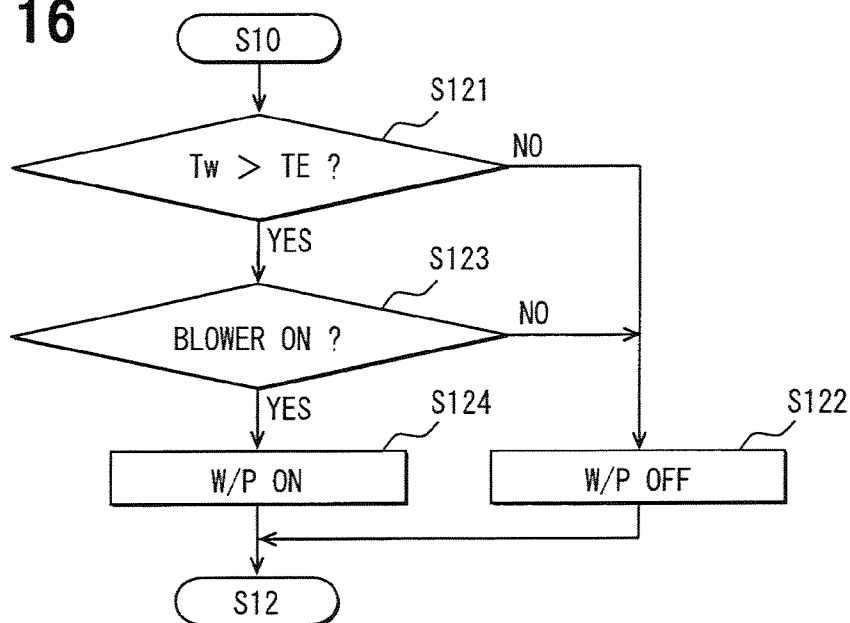


FIG. 17

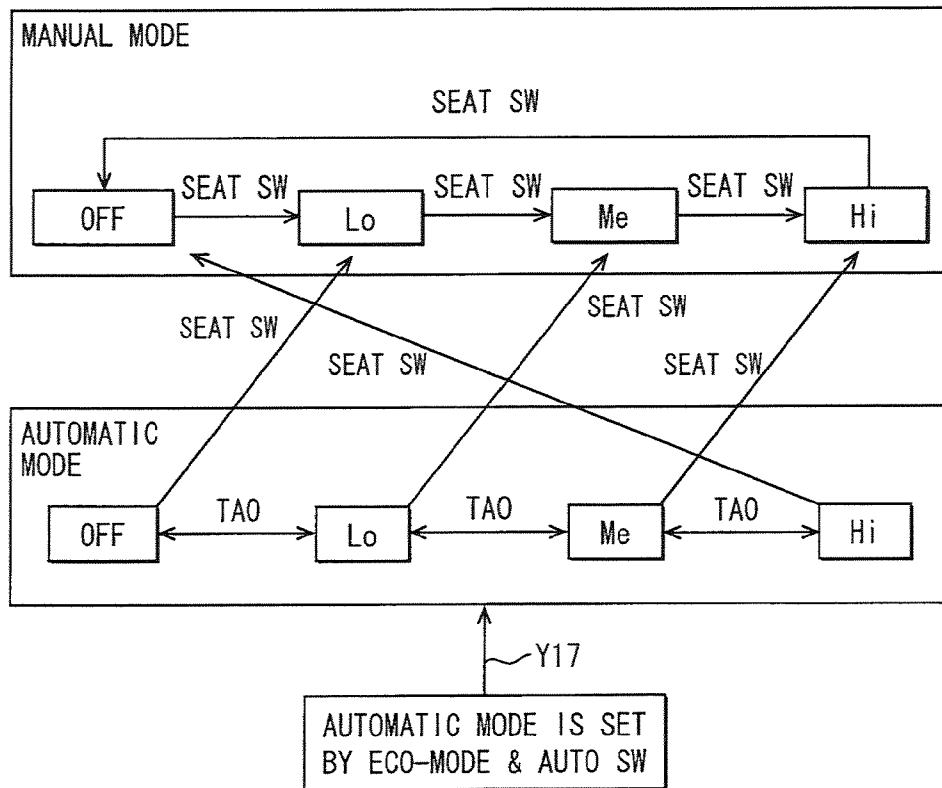


FIG. 18

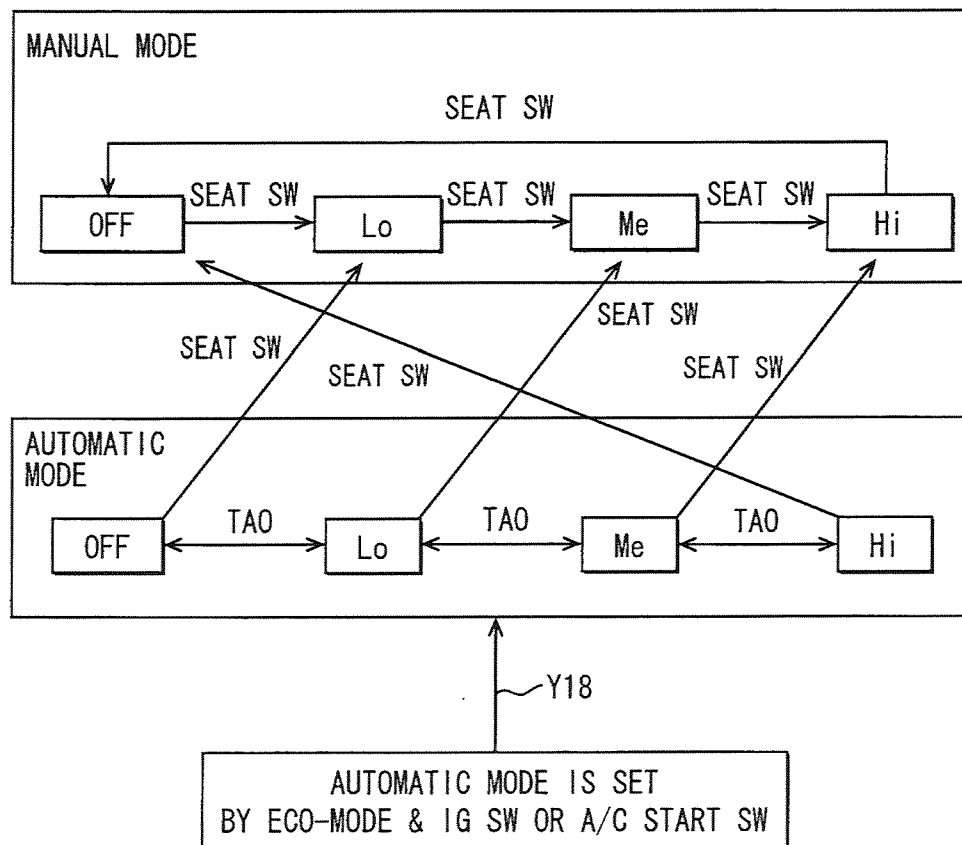


FIG. 19

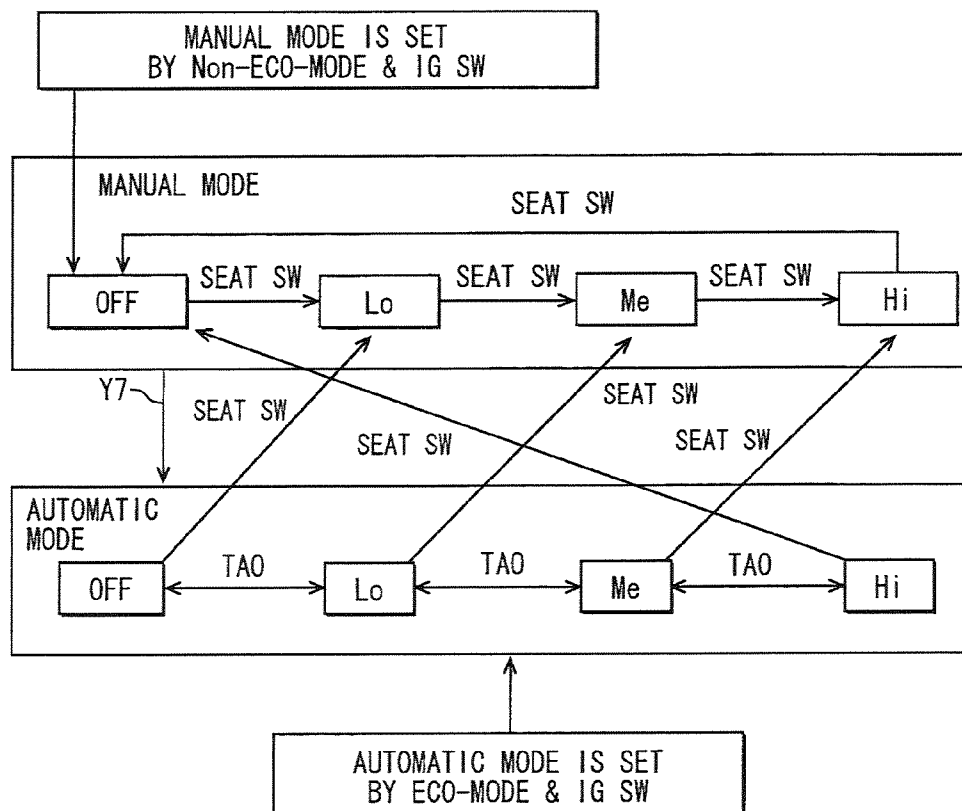


FIG. 20

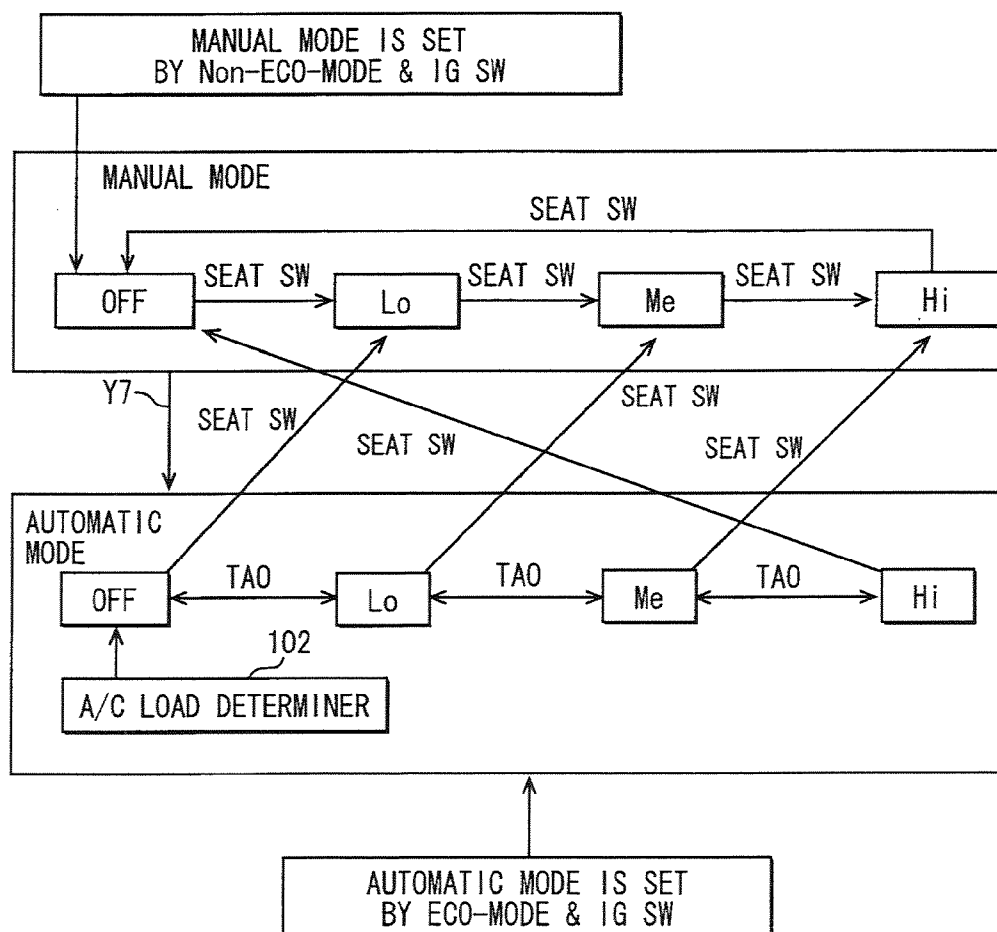


FIG. 21

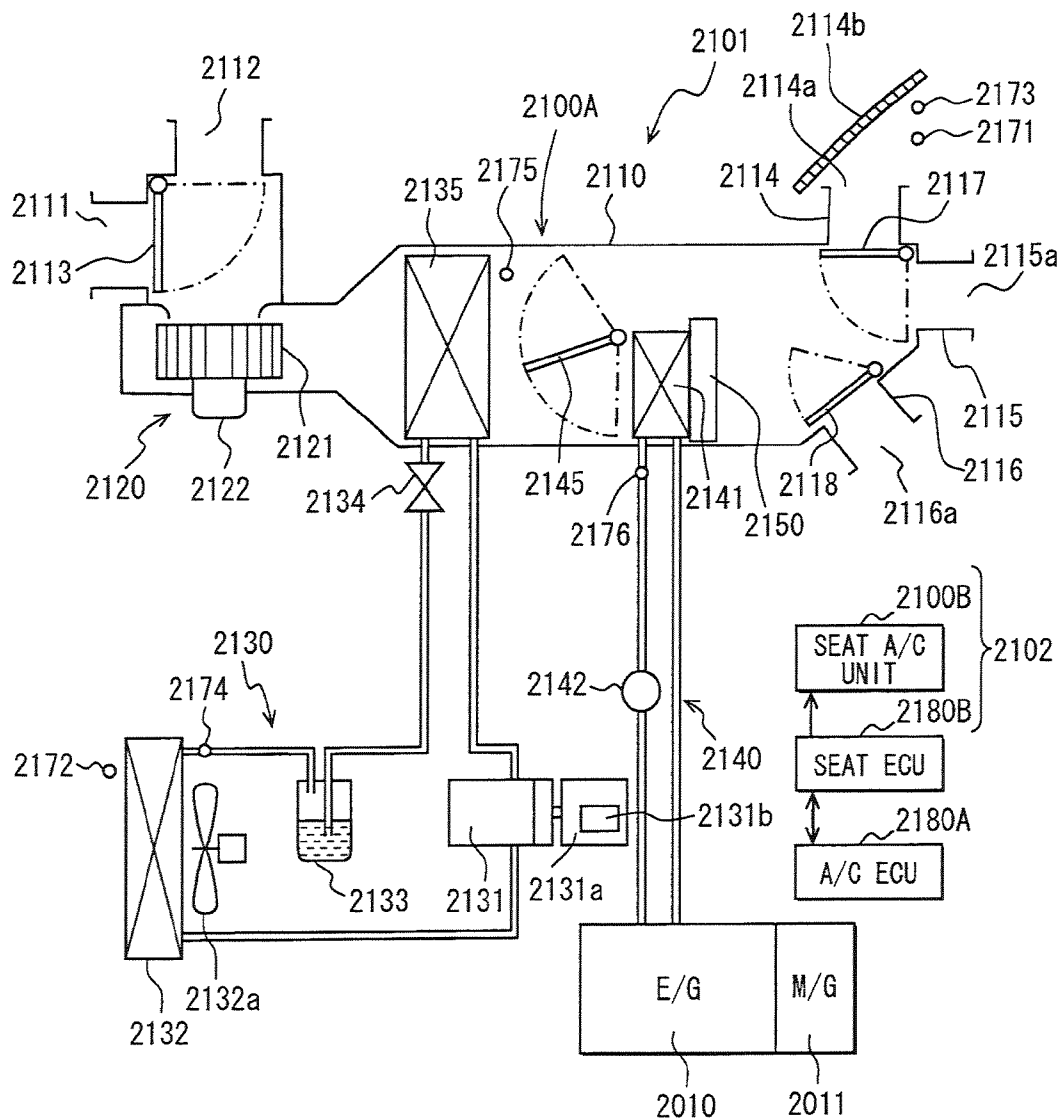


FIG. 22

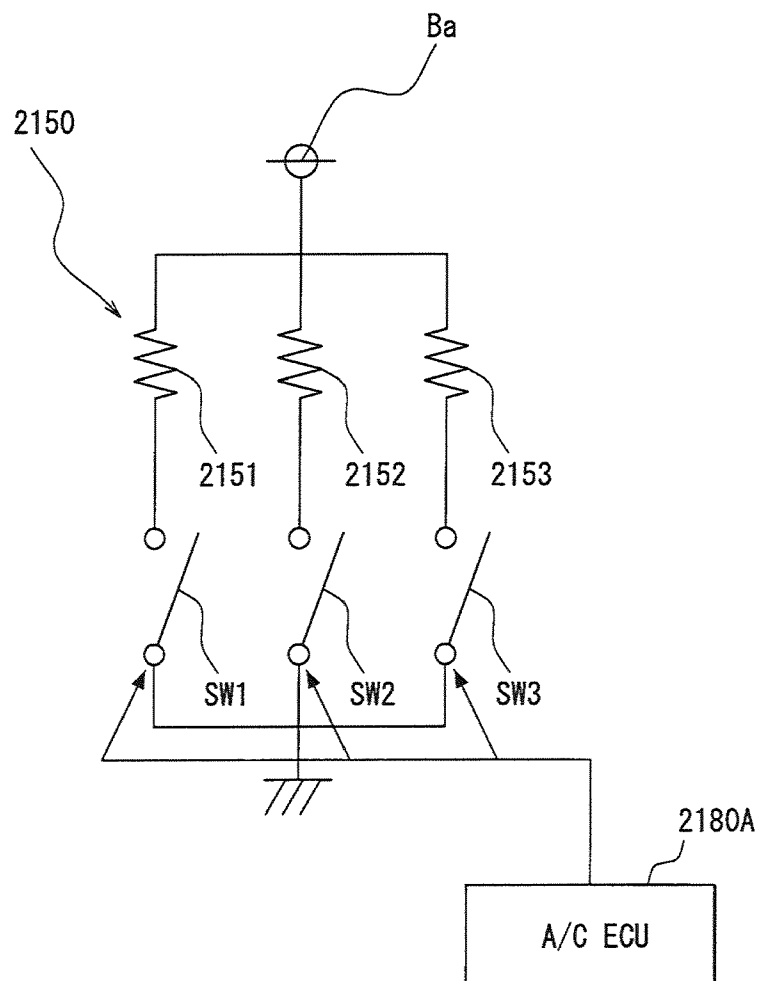


FIG. 23

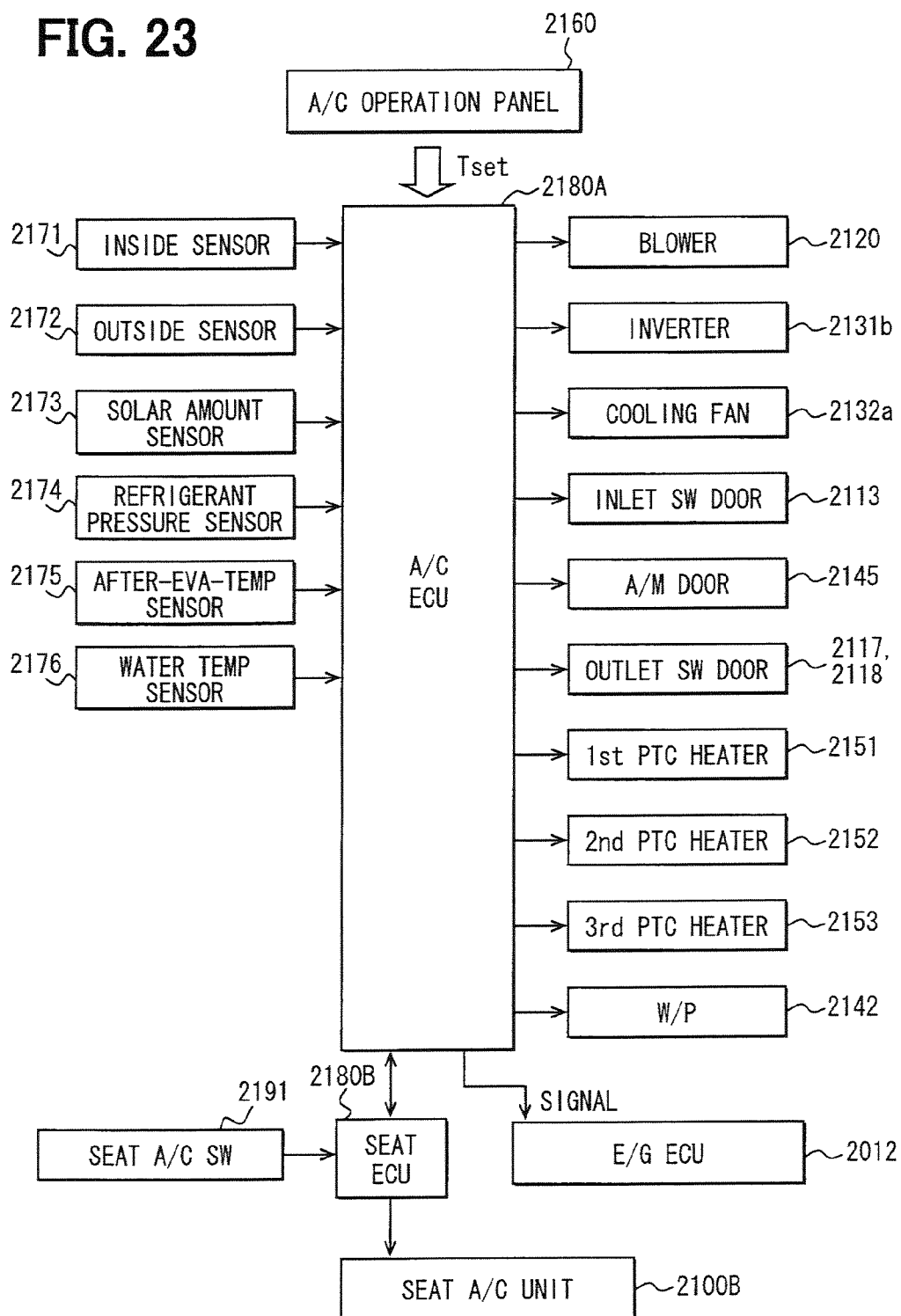


FIG. 24

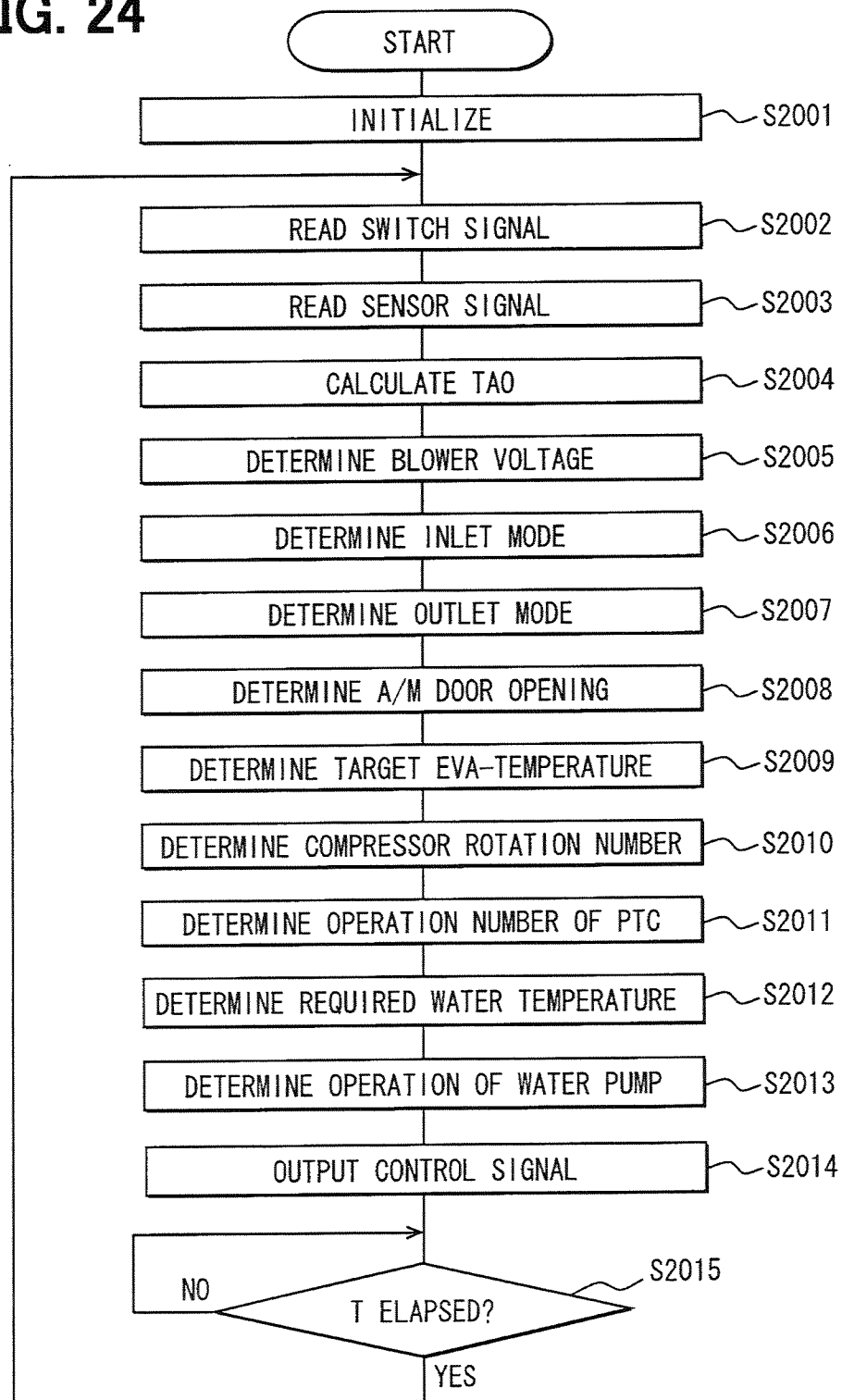


FIG. 25

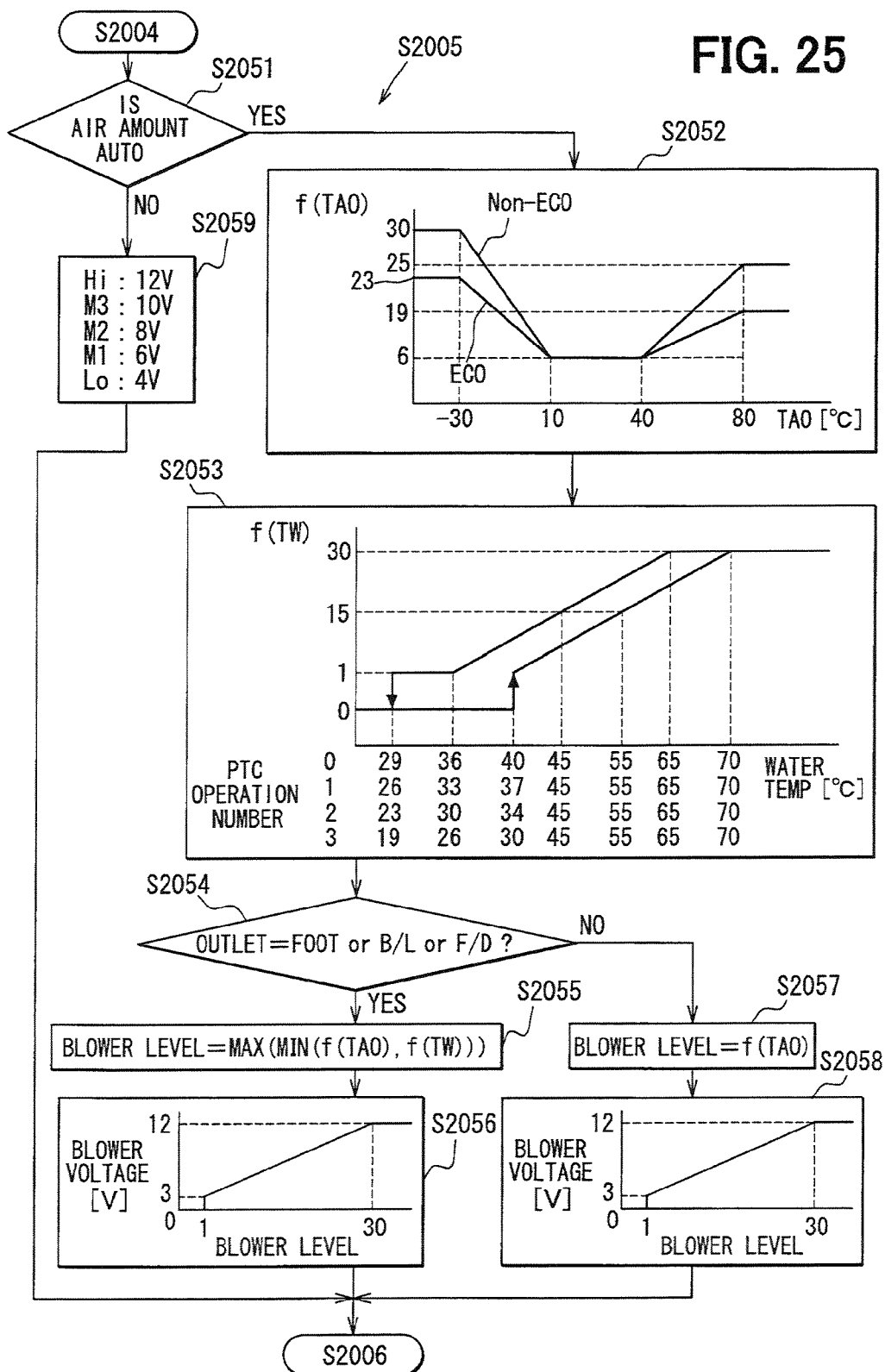


FIG. 26

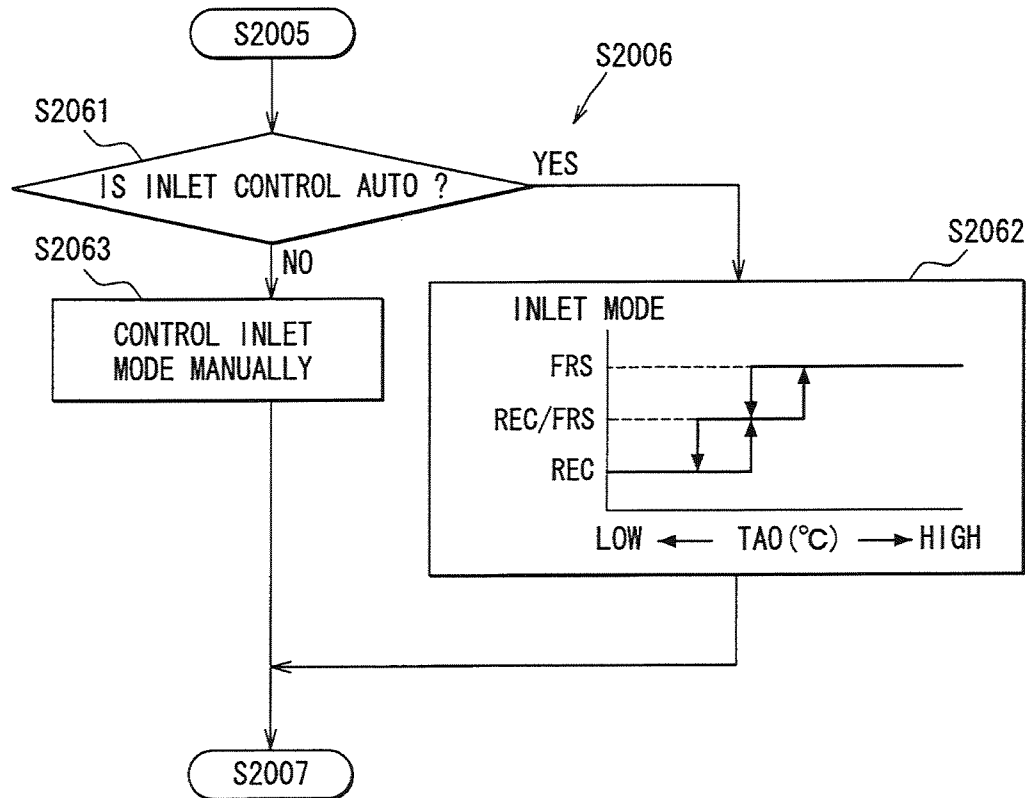


FIG. 27

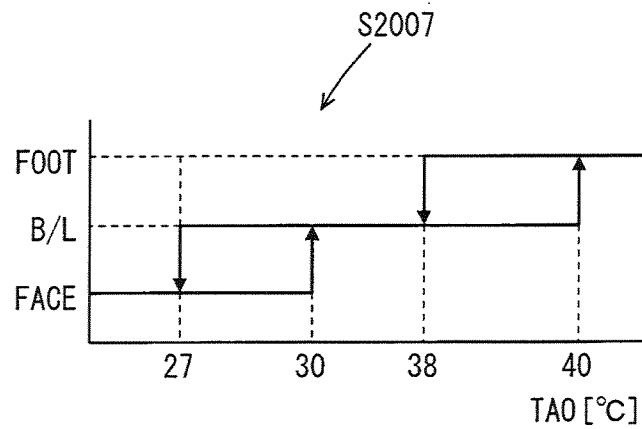


FIG. 28

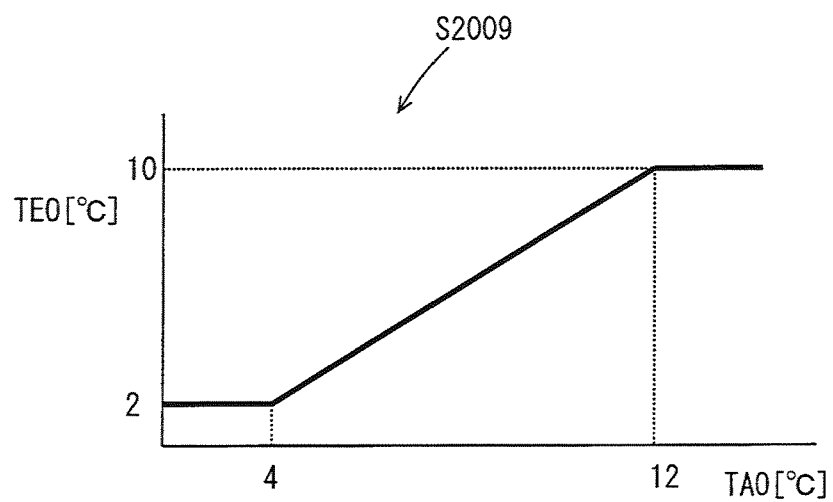


FIG. 29

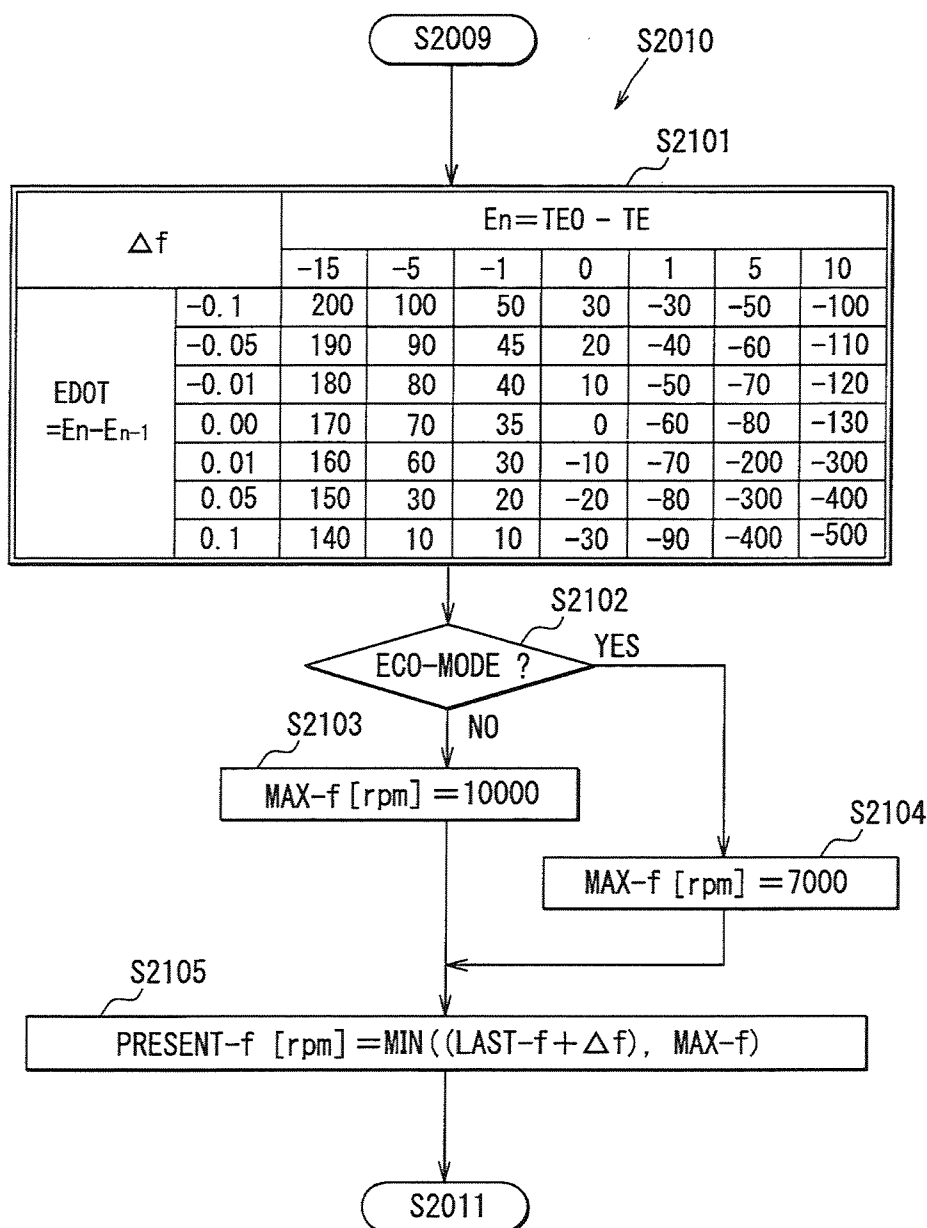


FIG. 30

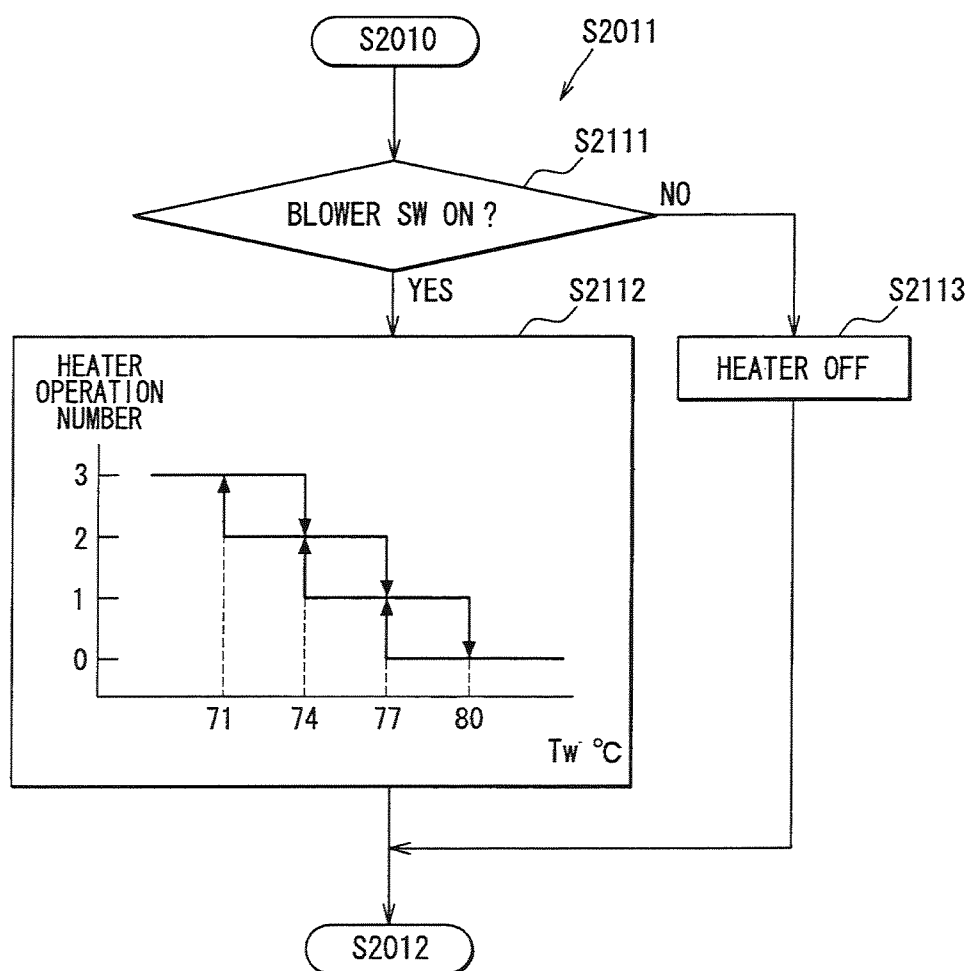


FIG. 31

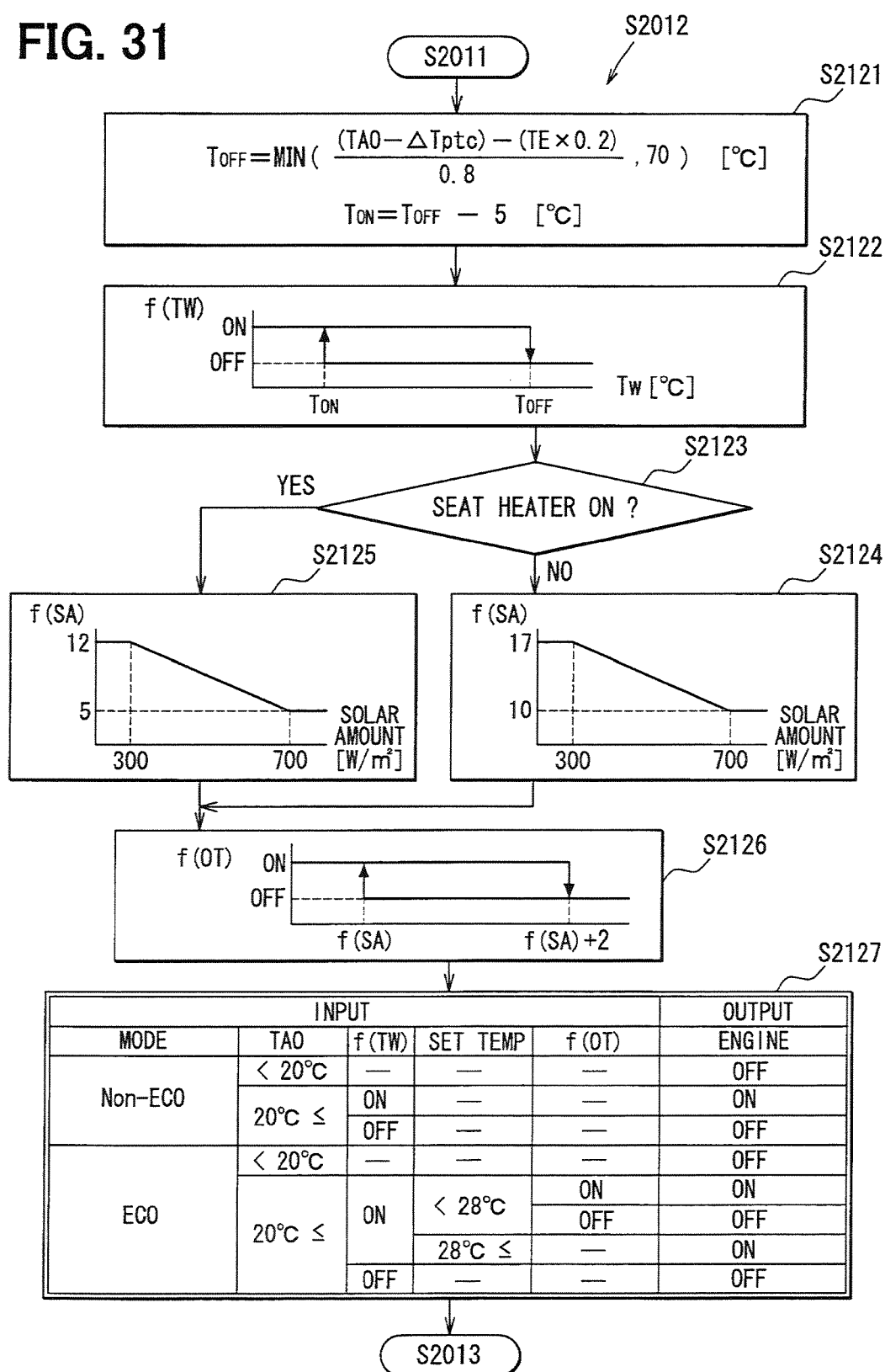


FIG. 32

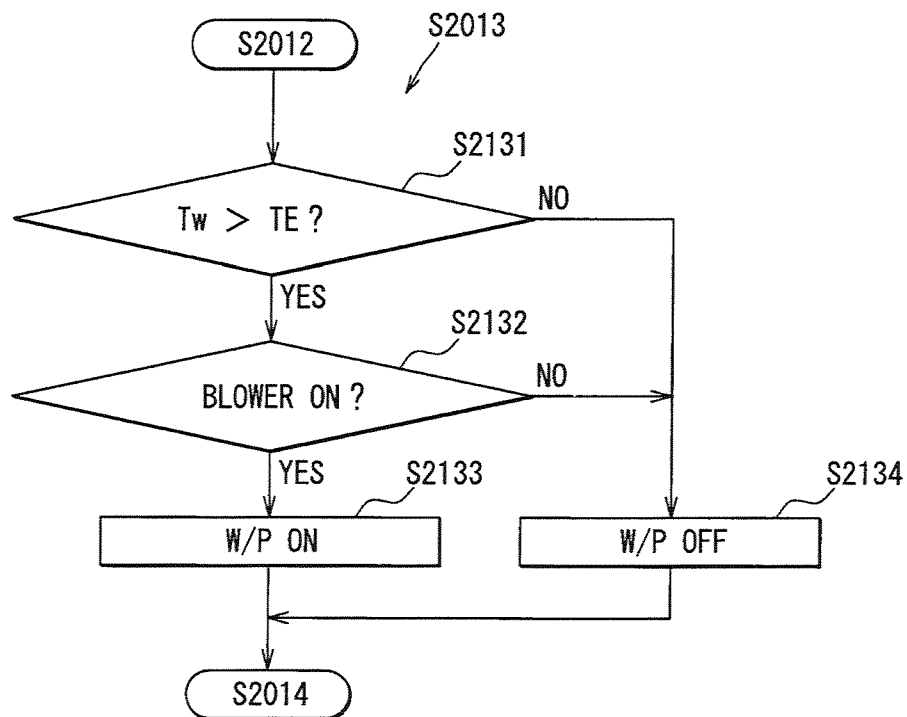
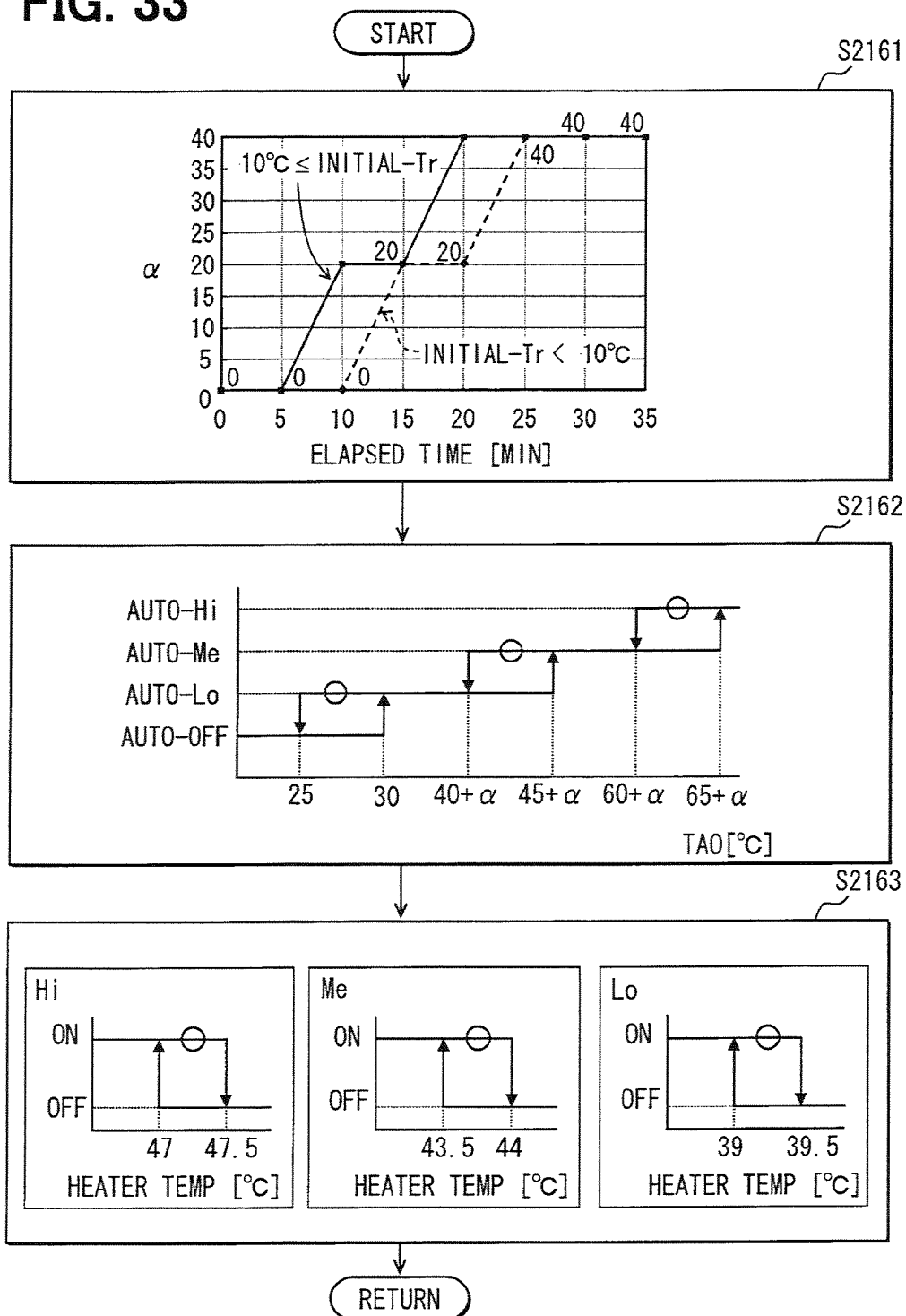


FIG. 33



1

AIR-CONDITIONER FOR VEHICLE**CROSS REFERENCE TO RELATED APPLICATION**

This application is based on Japanese Patent Application No. 2012-28632 filed on Feb. 13, 2012, Japanese Patent Application No. 2012-33150 filed on Feb. 17, 2012, and Japanese Patent Application No. 2012-177359 filed on Aug. 9, 2012, the disclosures of which are incorporated herein by reference in their entirety.

TECHNICAL FIELD

The present disclosure relates to an air-conditioner for a vehicle.

BACKGROUND

JP-Y2-62-4006 describes a conventional air-conditioner for a vehicle, and a seat heater which is automatically controlled according to an opening of an air mix door or a target blow-off temperature. Moreover, it is well-known that energy is required to be saved in air-conditioning by setting an eco-mode.

In the case where the seat heater is controlled according to the opening of the air mix door or the target blow-off temperature, the seat heater may be activated only when a temperature in the passenger compartment is low. An occupant in a passenger compartment may feel cold when the seat heater is not activated. Especially at the eco-mode time, an occupant is more likely to feel cold, because the air-conditioning level (degree) is lowered in the eco-mode time to save energy.

The seat heater of JP-Y2-62-4006 is embedded in a seat of the vehicle. Electric power supplied to the seat heater is controlled by a controller. Specifically, the electric power supplied to the seat heater is increased, as the opening of the air mix door is increased, or as the target blow-off temperature is raised.

The heat generating amount of the seat heater is automatically controlled according to the load of the air-conditioning such as the opening of the air mix door or the target blow-off temperature. When the load is large (for example, at a very cold time), the heat generating amount of the seat heater is increased to accelerate the warm-up effect of the seat heater. On the other hand, when the load is small, the heat generating amount of the seat heater is reduced to avoid wasteful energy consumption.

However, if outside air temperature is very low at the very cold time, the opening of the air mix door or the target blow-off temperature is set into a large (high) value. If the large value is maintained for a long time, the heat generating amount of the seat heater is also maintained as large even after the temperature in the passenger compartment becomes stable. In this case, an occupant in the passenger compartment feels too hot due to the too much heat of the seat heater. Similarly, if the outside air temperature is very high at a very hot time such as summer, the occupant may feel too cold.

SUMMARY

According to a first example of the present disclosure, an air-conditioner that conducts an air-conditioning, which has an eco-mode to save energy, for a passenger compartment of a vehicle includes a seat temperature control system and a controller. The seat temperature control system heats or cools

2

a seat in the passenger compartment. The controller automatically activates the seat temperature control system when the eco-mode is set.

According to a second example of the present disclosure, an air-conditioner that conducts an air-conditioning for a passenger compartment of a vehicle includes an air conditioning unit, a seat conditioning unit and a controller. The air conditioning unit controls a temperature of air in the passenger compartment. The seat conditioning unit controls a temperature of a seat in the passenger compartment. The controller controls a conditioning degree of the seat conditioning unit. The controller decreases the conditioning degree of the seat conditioning unit over time after the controller starts controlling the conditioning degree of the seat conditioning unit when the air conditioning unit automatically controls the temperature of air in the passenger compartment.

BRIEF DESCRIPTION OF THE DRAWINGS

The above and other objects, features and advantages of the present disclosure will become more apparent from the following detailed description made with reference to the accompanying drawings. In the drawings:

FIG. 1 is a schematic diagram illustrating an air-conditioner according to a first embodiment;

FIG. 2 is a schematic diagram illustrating an electric heater of the air-conditioner of the first embodiment;

FIG. 3 is a schematic diagram illustrating an electric construction of the air-conditioner of the first embodiment;

FIG. 4 is a flow chart illustrating a fundamental control process performed by an air-conditioning ECU of the air-conditioner of the first embodiment;

FIG. 5 is a front view illustrating an operation panel of the air-conditioner of the first embodiment;

FIG. 6 is a front view illustrating an eco-mode switch of the air-conditioner of the first embodiment;

FIG. 7 is an explanatory view illustrating a mode shift in a seat conditioning device of the air-conditioner of the first embodiment;

FIG. 8 is a graph illustrating a relationship between a target blow-off temperature and a seat mode in the air-conditioner of the first embodiment;

FIG. 9 is a graph illustrating temperature control of a seat heater in each operation state in the air-conditioner of the first embodiment;

FIG. 10 is a flow chart illustrating a process for determining a blower voltage in the air-conditioner of the first embodiment;

FIG. 11 is a flow chart illustrating a process for determining an air inlet mode in the air-conditioner of the first embodiment;

FIG. 12 is a flow chart illustrating a process for determining an air outlet mode in the air-conditioner of the first embodiment;

FIG. 13 is a flow chart illustrating a process for determining a compressor rotation speed in the air-conditioner of the first embodiment;

FIG. 14 is a flow chart illustrating a process for determining a PTC operation number in the air-conditioner of the first embodiment;

FIG. 15 is a flow chart illustrating a process for determining a required water temperature in the air-conditioner of the first embodiment;

FIG. 16 is a flow chart illustrating a process for determining an operation of a water pump in the air-conditioner of the first embodiment;

FIG. 17 is an explanatory view illustrating a mode shift in a seat conditioning device according to a second embodiment;

FIG. 18 is an explanatory view illustrating a mode shift in a seat conditioning device according to a third embodiment;

FIG. 19 is an explanatory view illustrating a mode shift in a seat conditioning device according to a fourth embodiment;

FIG. 20 is an explanatory view illustrating a mode shift in a seat conditioning device according to a fifth embodiment;

FIG. 21 is a schematic diagram illustrating an air-conditioner according to a sixth embodiment;

FIG. 22 is a schematic diagram illustrating an electric heater of the air-conditioner of the sixth embodiment;

FIG. 23 is a schematic diagram illustrating an electric construction of the air-conditioner of the sixth embodiment;

FIG. 24 is a flow chart illustrating a fundamental control process performed by an air-conditioning ECU of the air-conditioner of the sixth embodiment;

FIG. 25 is a flow chart illustrating a process for determining a blower voltage in the air-conditioner of the sixth embodiment;

FIG. 26 is a flow chart illustrating a process for determining an air inlet mode in the air-conditioner of the sixth embodiment;

FIG. 27 is a flow chart illustrating a process for determining an air outlet mode in the air-conditioner of the sixth embodiment;

FIG. 28 is a flow chart illustrating a process for determining a target after-evaporator temperature in the air-conditioner of the sixth embodiment;

FIG. 29 is a flow chart illustrating a process for determining a compressor rotation speed in the air-conditioner of the sixth embodiment;

FIG. 30 is a flow chart illustrating a process for determining a PTC operation number in the air-conditioner of the sixth embodiment;

FIG. 31 is a flow chart illustrating a process for determining a required water temperature in the air-conditioner of the sixth embodiment;

FIG. 32 is a flow chart illustrating a process for determining an operation of a water pump in the air-conditioner of the sixth embodiment; and

FIG. 33 is a flow chart illustrating temperature control of a seat heater in the air-conditioner of the sixth embodiment.

DETAILED DESCRIPTION

Embodiments of the present disclosure will be described hereafter referring to drawings. In the embodiments, a part that corresponds to a matter described in a preceding embodiment may be assigned with the same reference numeral, and redundant explanation for the part may be omitted. When only a part of a configuration is described in an embodiment, another preceding embodiment may be applied to the other parts of the configuration. The parts may be combined even if it is not explicitly described that the parts can be combined. The embodiments may be partially combined even if it is not explicitly described that the embodiments can be combined, provided there is no harm in the combination.

First Embodiment

A first embodiment will be specifically described with reference to FIGS. 1-16. A driving force driving a driving wheel of a vehicle is switched to be transmitted from a motor generator 51 (M/G) or an engine 50 (E/G) by a hybrid electronic control unit (hybrid ECU, not shown). Further, the

hybrid ECU controls charge and discharge of a battery (not shown) corresponding to an in-vehicle electricity storing equipment.

The battery has a charging apparatus (not shown) for charging electric power consumed by air-conditioning and driving of the vehicle. The charging apparatus has an outlet to be connected to an electricity supply source such as a power station or utility power source (home-use power source). The battery is charged by connecting the electricity supply source to the outlet.

An engine electronic control unit 61 (E/G ECU) shown in FIG. 3 and the hybrid ECU conduct the following controls.

(i) The engine 50 is basically stopped while the vehicle is stopped.

(ii) The driving force generated by the engine 50 is transmitted to the driving wheel while the vehicle is driving except for a slowdown time. The engine 50 is suspended, at the slowdown time, and power generated by the motor generator 51 charges the battery.

(iii) The driving forces generated by the motor generator 51 and the engine 50 are transmitted to the driving wheel when the vehicle has a large load at time of starting, acceleration, going up a hill or high speed driving.

(iv) The driving force of the engine 50 is transmitted to the motor generator 51, and the power generated by the motor generator 51 charges the battery, when the charge amount of the battery becomes lower than a target value.

(v) If the charge amount of the battery becomes lower than the target value while the vehicle is stopped, the engine ECU 61 receives a signal which starts the engine 50, and the driving force of the engine 50 is transmitted to the motor generator 51.

(vi) As shown in FIG. 3, a signal controlling a seat cooler 1011 or a seat heater 1012 is provided to a seat air-conditioning device 101 which corresponds to a seat temperature control system. The seat air-conditioning device 101 heats or cools a seat 1013 on which an occupant of the vehicle is seated. The seat cooler 1011 or the seat heater 1012 is arranged in the seat 1013 in a well-known manner. In addition, a seat air-conditioning controller 1014 is included in the seat air-conditioning device 101. A seat air-conditioning panel 1015 having a seat switch (not shown) is connected to the seat air-conditioning controller 1014, and supplies manipulate signals manipulating the seat air-conditioning device 101.

An air-conditioner 100 shown in FIG. 1 will be described. The air-conditioner 100 is mounted to the vehicle with the water-cooled engine 50, and has an air-conditioning unit which air-conditions inside of a passenger compartment of the vehicle. The air-conditioning unit is controlled by an air-conditioner electronic control unit 60 (A/C ECU) shown in FIG. 3. The air-conditioner 100 is used as what is called an auto air-conditioner. The air-conditioner 100 air-conditions inside of the passenger compartment by controlling refrigerant flow of a refrigerating cycle 1 and start of the engine 50. Moreover, the air-conditioner ECU 60 may correspond to a controller together with the seat air-conditioning controller 1014.

The air-conditioning unit is arranged ahead in the passenger compartment, and has an air-conditioning case 10 through which air passes. The air-conditioning case 10 has air inlets 11, 12 and air outlets on the opposite side opposite from the air inlets 11, 12. Air goes to the passenger compartment through the air outlets. The air-conditioning case 10 further has an air passage 10a through which air passes from the air inlets 11, 12 to the air outlets. A blower unit 14 is arranged in the case 10, on the upstream side adjacent to the air inlets 11, 12.

5

The blower unit **14** (blower used for air-conditioning) includes an inlet switch mechanism (door) **13** and a blower **16**. The door **13** is driven with an actuator such as servo motor, and may correspond to an air inlet switching portion which changes opening degree of the air inlets **11**, **12**.

The air-conditioning unit is placed at the center position in the left-and-right direction of the vehicle, under an instrument board ahead in the passenger compartment. The blower unit **14** is located on the front side of the air-conditioning unit. The air inlet **11** of the blower unit **14** draws air inside of the passenger compartment.

The blower **16** is a centrifugal type fan generating air flow going toward the passenger compartment in the air-conditioning case **10**. The blower **16** is driven to rotate by a blower motor **15** which is controlled by a blower drive circuit (not shown). The blower **16** changes an amount of conditioned-air blown off from the air outlets toward the passenger compartment.

An evaporator **7** and a heater core **34** are arranged in the air-conditioning case **10**, and may correspond to a heat exchanger for air-conditioning (air-conditioning part) which heats or cools air sent by the blower unit **14**, then the conditioned-air is sent to the air outlets. The evaporator **7** may be a cooling heat exchanger which controls the temperature of the conditioned-air passing through the case **10** toward the passenger compartment, using refrigerant.

The heater core **34** is located downstream of the evaporator **7** in the air flow direction, and may correspond to a heating heat exchanger, in which heat is exchanged between the air passing through the air passage **10a** and cooling water of the engine **50**, thereby heating the air. The cooling water circulates in a cooling water circuit **31** due to an electric water pump **32**, and is warmed by a water jacket of the engine **50**. A radiator (not shown), a thermostat (not shown), and the heater core **34** are disposed in the circuit **31**.

The temperature of the cooling water becomes high after cooling the engine **50**, and the high-temperature cooling water flows through the heater core **34**. The heater core **34** reheats the air cooled by the evaporator **7** using the high-temperature cooling water as a heat source for heating. The heater core **34** is placed in the air-conditioning case **10** to block a part of the air passage **10a**, and is located downstream of the evaporator **7**.

An air mix (mixing) door **17** is located upstream of the heater core **34** in the air flow direction, and is used for controlling the temperature in the passenger compartment. The air mix door **17** is driven by an actuator such as servo motor. Moreover, the air mix door **17** changes the blow-off temperature of the conditioned-air which is blown off from each air outlet toward the passenger compartment. In other words, the air mix door **17** is an air mix portion which controls the ratio of the air passing through the evaporator **7** to the air passing through the heater core **34**.

The evaporator **7** is one of components constructing the refrigerating cycle **1**. The refrigerating cycle **1** includes a compressor **41** which draws, compresses and discharges refrigerant. The compressor **41** is driven by an electric motor **43** into which three-phase alternating current is input from an inverter **42** after converting a direct current of the battery into the three-phase alternating current with the inverter **42**. The refrigerating cycle **1** further includes a condenser **3**, a receiver **5**, an expansion valve **6** in addition to the evaporator **7** and the compressor **41**. The condenser **3** condenses refrigerant, which is discharged from the compressor **41**, into liquid state. The receiver **5** separates the liquid refrigerant flowing from the condenser **3** into gas state and liquid state. The expansion valve **6** adiabatically expands the liquid refrigerant flowing

6

from the receiver **5**. The evaporator **7** evaporates the two-phase (gas and liquid) refrigerant flowing from the expansion valve **6**.

When the rotation power of the electric motor **43** is transmitted to the compressor **41**, the evaporator **7** cools air. When the rotation of the electric motor **43** is stopped, the discharge of the refrigerant by the compressor **41** is stopped, and the cooling of air conducted by the evaporator **7** is suspended. Moreover, the battery is charged with the electric power of the motor generator **51**. Therefore, the compressor **41** driven with the electric motor **43** constructs a compression portion of an electrically-driven compressor (**41**, **42**, **43**) which obtains electric power from the motor generator **51**. The condenser **3** is placed at a position easy to receive the running wind produced when the vehicle (hybrid car) runs. The condenser **3** may construct an outdoor heat exchanger in which the refrigerant flowing inside exchanges heat with outside air ventilated with an outdoor fan **4** and the running wind.

The air outlets are located at the most downstream part in the air-conditioning case **10**. A defroster duct **23** connects a defroster outlet of the air outlets to a defroster opening **18**, which is open at the most downstream end of the defroster duct **23**. The defroster opening **18** mainly blows off warm air toward an inner surface of a front windshield **49** of the vehicle.

A face duct **24** connects a face outlet of the air outlets to a face opening **19**, which is open at the most downstream end of the face duct **24**. The face opening **19** mainly blows off cool air toward a face and an upper body of an occupant of the vehicle. A foot duct **25** connects a foot outlet of the air outlets to a foot opening **20**, which is open at the most downstream end of the foot duct **25**. The foot opening **20** mainly blows off warm air toward a foot of the occupant.

Two outlet switching doors **21**, **22** are rotatably mounted on inner side of the outlets, and driven by actuator such as servo motor, so as to change the air outlet mode to any one of face mode, bilevel mode, foot mode, foot defroster mode, and defroster mode.

An electric heater **35** is arranged downstream of the heater core **34** in the air flow direction, and may correspond to an auxiliary heating equipment which heats the air using a heat source other than the waste heat of the engine **50**. The electric heater **35** heats the warm air which passed through the heater core **51**. As shown in FIG. 2, the electric heater **35** has heater wires **351**, **352**, **353** which are made of PTC or Nichrome resistor, which are connected in parallel with each other between a power source Ba and the ground.

Switch elements SW1, SW2, SW3 are provided to the heater wires **351**, **352**, **353**, respectively. When the switch element SW1, SW2, SW3 is turned on, electricity is supplied to the heater wire **351**, **352**, **353** from the power source Ba. When the switch element SW1, SW2, SW3 is turned off, the electricity supply is stopped. The switch element SW1, SW2, SW3 is turned on or off by the air-conditioner ECU **60** of FIG. 3.

Electric construction of the air-conditioner **100** will be described with reference to FIG. 3. The air-conditioner ECU **60** may correspond to a controller together with the seat air-conditioning controller **1014**. Ignition (IG) signal is output when an ignition switch **74** (FIG. 3) is turned on. The engine **50** (FIG. 1) is started or stopped by the ignition switch **74**. When the ignition (IG) signal is output, the battery (in-vehicle power source, not shown) supplies direct current to the air-conditioner ECU **60** and the seat air-conditioning controller **1014** so as to start computing and processing.

A communication signal is output from the engine ECU **61** to the air-conditioner ECU **60**. A switch signal is output from

7

each switch on the operation panel **70** arranged on the front face of the passenger compartment to the air-conditioner ECU **60**. A sensor signal is output from each sensor to the air-conditioner ECU **60**. The engine ECU **61** may be referred as fuel-injection ECU.

An operation system including the operation panel **70** is explained with reference to FIGS. **5** and **6**. FIG. **5** is a front view illustrating the operation panel **70**. FIG. **6** is a front view illustrating an eco-mode switch **710** prepared in the instrument panel of the vehicle. The eco-mode switch **710** is connected to the air-conditioner ECU **60** and is used for setting an eco-mode to save energy (power), for example, in the operation of the compressor **41**. The eco-mode operation is set when the eco-mode switch **710** is pushed once. If the eco-mode switch **710** is pushed once again, non-eco-mode operation is set (eco-mode-off). These operations are repeated whenever the eco-mode switch **710** is pushed.

The operation panel **70** is connected to the air-conditioner ECU **60** of FIG. **3**, and the air-conditioner **100** is operated through the operation panel **70**. As shown in FIG. **5**, the operation panel **70** is disposed in the instrument panel of the vehicle, and an occupant who is seated on the front seat can operate the operation panel **70**.

The operation panel **70** has a display **701**, an A/C switch **702**, a temperature setting switch **703**, an air inlet setting switch **704**, a blower switch **705**, a mode switch **706**, an outside air temperature display switch **707** and the like. The display **701** displays various kinds of information. The air-conditioner **100** is activated or stopped by the A/C switch (operation switch) **702**. The temperature setting switch **703** is used for setting (raising or lowering) a preset temperature. The air inlet setting switch **704** is used for manually selecting the air inlet mode between an inside air mode and an outside air mode. The blower switch **705** is used for setting (increasing or decreasing) the amount of the conditioned air. The mode switch **706** is used for selecting the air outlet which blows off the conditioned-air. A temperature of the outside air is displayed when the outside air temperature display switch **707** is turned on. In addition, the blower switch **704** corresponds to a switch starting the air-conditioning. When the blower switch **704** is turned on, a signal instructing the air-conditioning is transmitted to the air-conditioner ECU **60**.

It becomes possible to start or stop the air-conditioning operation, to switch the air inlet mode between the inside air mode and the outside air mode, to set the preset temperature, the air amount and the air outlet mode, with looking at the display **701**, for the air-conditioner **100**. The air-conditioner ECU **60** enables the air-conditioning operation which is based on the setting conducted on the operation panel **70**.

The operation panel **70** further has an auto (AUTO) switch **708**. When the auto switch **708** is turned on, the air-conditioner ECU **60** automatically sets the target blow off temperature, the air amount, the air outlet mode, etc. based on the preset temperature, the temperature in the passenger compartment, the outside air temperature, the solar amount, etc. in a manner that the temperature in the passenger compartment agrees with the preset temperature. That is, the air-conditioner ECU **60** sets the target blow off temperature based on the preset temperature, the environmental condition, etc., and sets the rotation number of the compressor **41** (rotation speed of the electric motor **43**), the opening of the air mix door **17**, etc. so as to obtain the set target blow off temperature. Further, the air-conditioner ECU **60** selects the air outlet and sets the blow-off air amount (blower air amount).

Thus, the temperature in the passenger compartment is maintained to agree with the preset temperature by performing the automatic air-conditioning operation based on the

8

setting. Moreover, if the outside air temperature display switch **707** is operated, an outside air temperature T_{am} detected by an outside air temperature sensor **72** (FIG. **3**) is displayed on the display **701**.

The air-conditioner ECU **60** is connected to the engine ECU **61** and the hybrid ECU. For example, when an engine-cooling-water temperature T_w detected by a cooling-water-temperature sensor has not reached a predetermined temperature, the air-conditioner ECU **60** requires that the engine **50** is turned on (engine-on-demand). Therefore, the engine **50** is driven to raise the engine-cooling-water temperature T_w , thereby enabling the heater core **34** to conduct the heating operation sufficiently. Moreover, fuel can be saved by stopping the engine **50**.

In the air-conditioner **100**, the eco-mode (economy mode, energy-saving mode) can be set to save the energy. Specifically, in the air-conditioner **100**, operation mode is selected between the eco-mode which gives priority to the energy-saving effect and an auto mode which gives priority to the comfortableness in the passenger compartment.

The eco-mode switch **710** is connected to the air-conditioner ECU **60**, and is used for selecting the eco-mode or not as a selecting portion. As shown in FIG. **6**, the eco-mode switch **710** is located at a specified position of the instrument panel operatable by an occupant. Moreover, the eco-mode switch **710** is turned on and off by pressing or touching the switch **710**, so as to switch the mode between the eco-mode and the non-eco-mode (eco-mode-off). When the eco-mode is selected, a light emitting diode of an eco-mode display part **710a** emits light.

The air-conditioner ECU **60** includes a well-known microcomputer (not shown) with CPU (central processing unit) which performs computing and processing, memory such as ROM or RAM, and I/O port (input/output circuit).

A sensor signal output from a sensor has A/D conversion by the I/O port or A/D conversion circuit, and the converted signal is input into the microcomputer. The air-conditioner ECU **60** is connected with an inside air temperature sensor **71**, an outside air temperature sensor **72**, a solar amount sensor **73** and the ignition switch **74**. The inside air temperature sensor **71** detect an inside air temperature T_r around a driver's seat of the vehicle. The outside air temperature sensor **72** detects the outside air temperature T_{am} (outdoor air temperature) outside of the passenger compartment. The solar amount sensor **73** detects the solar amount T_s outside of the passenger compartment. The ignition switch **74** (start-up switch) is operated to start the vehicle. The IG signal is input into the air-conditioner ECU **60** when the ignition switch **74** is turned on.

Moreover, the air-conditioner ECU **60** is connected with an after-eva temperature sensor and a humidity sensor (not shown in FIG. **3**). The after-eva temperature sensor detects a temperature of air immediately after passing through the evaporator **7** (as an after-eva temperature T_E). The humidity sensor detects a relative humidity in the passenger compartment.

The cooling-water-temperature sensor (not shown) detects the engine-cooling-water temperature T_w of the vehicle, and is connected to the engine ECU **61**. The air-conditioner ECU **60** acquires the engine-cooling-water temperature T_w through the engine ECU **61**. Moreover, the inside air temperature sensor **71**, the outside air temperature sensor **72**, the after-eva temperature sensor, and the cooling-water-temperature sensor may be made of thermo element such as a thermistor, for example.

Furthermore, the solar amount sensor **73** has a solar amount level detector detecting the solar amount level irradiated into the passenger compartment, and may be constructed

by a photodiode, for example. The humidity sensor and the inside air temperature sensor **71** are accommodated in a recess formed in the front face of the instrument panel near the driver's seat, and are used for determining whether the defroster mode is set for defrosting the front windshield **49** (FIG. 1).

Operations conducted by the air-conditioner ECU **60** will be described with reference to FIG. 4. FIG. 4 is a flow chart illustrating an example of control process performed by the air-conditioner ECU **60**. First, if the ignition switch **74** is turned on, for example, by the driver to switch the parked state to the drivable state, a direct current power source is supplied to the air-conditioner ECU **60**, and the control program beforehand memorized in the memory will be executed.

At **S1**, the contents of the memory in the microcomputer of the air-conditioner ECU **60** are initialized, and the air-conditioner ECU **60** moves to **S2**. At **S2**, the switch signal is read from the various operation switches including the eco-mode switch **710** of FIG. 6.

At **S3**, the sensor signal is read from the various sensors, and the air-conditioner ECU **60** moves to **S4**. In **S2** and **S3**, various data are read into the memory for processing data. The sensor signal may be the inside air temperature T_r detected by the sensor **71**, the outside air temperature T_{am} detected by the sensor **72**, the solar amount T_s detected by the sensor **73**, the after-eva temperature T_e detected by the after-eva temperature sensor, and the engine-cooling-water temperature T_w detected by the cooling-water-temperature sensor.

At **S4**, the target blow off temperature TAO is calculated by inputting the data into the following Expression 1 memorized in advance, and the air-conditioner ECU **60** moves to **S5**.

$$TAO = K_{set} \times T_{set} - K_r \times T_r - K_{am} \times T_{am} - K_s \times T_s + C \quad (\text{Expression 1})$$

Here, T_{set} represents the preset temperature set with the temperature setting switch. T_r represents the inside air temperature. T_{am} represents the outside air temperature. T_s represents the solar amount. Values of K_{set} , K_r , K_{am} and K_s are gains, and a value of C is a correcting constant for the whole of Expression 1. A control value of the actuator of the air mix door **17** and a control value of the rotation speed of the water pump **32** are computed by using the TAO value and the signal output from the sensor.

At **S5**, the blower voltage is determined. The blower voltage is a voltage applied to the blower motor **15**, and the blow-off air amount is changed according to the blower voltage. Details of **S5** are mentioned later.

At **S6**, the air inlet mode is determined based on the target blow off temperature TAO by executing a process for determining the air inlet mode. Thus, the air inlet from which air is drawn into the air-conditioning case **10** is determined, and the air-conditioner ECU **60** moves to **S7**. Details of **S6** are mentioned later.

At **S7**, the air outlet mode is determined based on the target blow off temperature TAO by executing a process for determining the air outlet mode to be described below. Thus, the air outlet from which the conditioned-air is blown off to the passenger compartment is determined, and the air-conditioner ECU **60** moves to **S8**. For example, the air outlet mode may be set based on a map memorized in the ROM so as to correspond to the target blow off temperature TAO.

At **S8**, a process for determining the compressor rotation speed to be described below is executed, and the air-conditioner ECU **60** moves to **S9**.

At **S9**, a process for determining the operation number of the PTC heater (electric heater) to be described below is executed.

At **S10**, a process for determining the required temperature of the engine cooling water to be described below is executed based on the target blow off temperature TAO etc. in order to use the engine cooling water as heat source for heating and defrosting, and the air-conditioner ECU **60** moves to **S11**. Details of **S10** are mentioned later.

At **S11**, a process for determining the operation of the water pump is executed based on the engine-cooling-water temperature T_w etc. so as to turn on or off the electric water pump **32** (FIG. 1), and the air-conditioner ECU **60** moves to **S12**. Details of **S11** are mentioned later.

At **S12**, a control signal is output to the actuator, such that each control state computed or determined at **S4-S11** is acquired, and the air-conditioner ECU **60** moves to **S13**. At **S12**, the display of the eco-mode and the auto mode is also controlled.

Moreover, at **S12**, a signal in connection with the target blow off temperature TAO computed at **S4** is sent to the seat air-conditioning controller **1014** in the seat air-conditioning device **101**. Moreover, the operation information of the eco-mode switch read at **S2** is transmitted to the seat air-conditioning controller **1014** in the seat air-conditioning device **101**, so as to report whether the air-conditioner **100** is operating with the eco-mode or the non-eco-mode. Moreover, the state information (ON or OFF) of the ignition switch **74**, and the operation information of the auto switch **708** are also transmitted to the seat air-conditioning controller **1014** in the seat air-conditioning device **101** from the air-conditioner ECU **60**, so as to report whether the air-conditioner **100** is operating with the manual mode or the auto mode.

The following control is performed in the seat air-conditioning controller **1014** of the seat air-conditioning device **101**. At the time of eco-mode, the seat air-conditioning device **101** is automatically operated with a seat auto mode. Specifically, the seat heater **1012** is turned on immediately after the eco-mode is set, so an occupant of the vehicle is restricted from feeling cold even when a target temperature of the air-conditioner **100** is set lower at the eco-mode.

As shown in FIG. 3, the seat air-conditioning device **101** has the seat heater **1012** and the seat air-conditioning panel **1015**. The seat heater **1012** heats the seat **1013** using electric heater. The seat air-conditioning panel **1015** has a seat heater switch (hereinafter referred as seat SW) which controls the seat heater **1012**. Moreover, the seat air-conditioning device **101** operates in a seat manual mode or the seat auto mode. At the seat manual mode, the temperature of the seat **1013** is gradually (stepwise) controlled by manually operating the seat heater switch of the seat air-conditioning panel **1015**.

As shown in FIG. 7, the seat manual mode of the seat air-conditioning device **101** has a manual-OFF, a manual-Lo, a manual-Me, and a manual-Hi, which are set in order of the temperature from low to high. The seat air-conditioning device **101** receives a signal of the target blow off temperature TAO from the air-conditioner ECU **60**.

When the seat air-conditioning device **101** is set in the seat auto mode by the seat auto switch of the seat air-conditioning panel **1015**, the temperature of the seat **1013** is changed according to the target blow off temperature TAO. When the seat heater **1012** operates with the seat auto mode, the mode is changed in order of an auto-OFF, an auto-Lo, an auto-Me, and an auto-Hi, which are set in order of the temperature from low to high.

In FIG. 7, when the seat air-conditioning device **101** is set in the seat manual mode, the seat heater **1012** is changed in order of the manual-OFF, the manual-Lo, the manual-Me, and the manual-Hi by every operating the seat heater switch of the seat air-conditioning panel **1015**.

11

For example, at the time of the manual-OFF, if the eco-mode switch **710** of FIG. **6** is operated to change the air-conditioner **100** from the non-eco-mode to the eco-mode, the control state is shifted as shown in an arrow direction Y7 of FIG. **7**. Thereby, the operation of the seat air-conditioning device **101** is changed to the seat auto mode, in which the auto-OFF, the auto-Lo, the auto-Me or the auto-Hi is automatically selected based on the target blow off temperature TAO, as shown in FIG. **8**.

While the seat air-conditioning device **101** is operated with the seat auto mode, if the seat heater switch (seat SW) of the seat air-conditioning panel **1015** is operated, the mode is shifted from the auto-OFF to the manual-Lo, from the auto-Lo to the manual-Me, from the auto-Me to the manual-Hi, or from the auto-Hi to the manual-OFF.

The shifting state in the seat auto mode is also shown in FIG. **7**. Every time when a signal is received from the air-conditioner ECU **60**, the mode is shifted automatically in order of the auto-OFF, the auto-Lo, the auto-Me, and the auto-Hi according to the target blow off temperature TAO, as shown in FIG. **8**. The temperature of the seat heater **1012** becomes low in order of Hi, Me and Lo.

Left graph of FIG. **9** illustrates a relationship between the temperature of the seat heater **1012** (heater temperature) and ON or OFF of the seat heater **1012**, at the mode of auto-Hi and manual-Hi. The heater temperature represents a target temperature (° C.) of the seat heater **1012** at each mode. Thus, at the time of the manual-Hi and the auto-Hi, when the temperature of the seat heater **1012** becomes 47° C., the seat heater **1012** is turned on. In contrast, when the temperature of the seat heater **1012** becomes 47.5° C., the seat heater **1012** is turned off. The seat heater **1012** is turned on or off with the hysteresis. The control is started from an operating state indicated by a circle mark in FIG. **9** at the control start time.

Center graph of FIG. **9** illustrates a relationship between the temperature of the seat heater **1012** (heater temperature) and ON or OFF of the seat heater **1012**, at the mode of auto-Me and manual-Me.

Right graph of FIG. **9** illustrates a relationship between the temperature of the seat heater **1012** (heater temperature) and ON or OFF of the seat heater **1012**, at the mode of auto-Lo and manual-Lo.

When the air-conditioner **100** is switched from the non-eco-mode to the eco-mode to reduce the power of the compressor **41** by operating the eco-mode switch **710**, the target temperature in the passenger compartment is set lower. At the moment setting the eco-mode, as shown in FIG. **7**, the seat air-conditioning device **101** is automatically set into the seat auto mode. As a result, the temperature of the seat heater **1012** is promptly and optimally controlled according to the target blow off temperature TAO, as shown in FIG. **8**. Therefore, the occupant can be restricted from feeling cold.

The above explanation is conducted as to the operation of the seat heater **1012** of the seat air-conditioning device **101**. The seat air-conditioning device **101** is further equipped with the seat cooler **1011** made of, for example, Peltier element, and the same control is possible also for the seat cooler **1011**. The air-conditioner **100** may be switched from the non-eco-mode to the eco-mode to reduce the power of the compressor **41** by operating the eco-mode switch **710** when the seat cooler **1011** is operated in summer. At the moment setting the eco-mode to increase the target temperature in the passenger compartment, the seat air-conditioning device **101** is set into the seat auto mode, similarly to FIG. **7**. As a result, the temperature of the seat cooler **1011** is promptly and optimally controlled according to the target blow off temperature TAO

12

to cool the occupant, so the occupant can be restricted from feeling uncomfortable to the minimum.

At **S13** of FIG. **4**, when a predetermined time T is elapsed, **S2** is restarted.

Next, each control conducted by the air-conditioner ECU **60** is explained in more detail.

First, the blower voltage determination process (**S5**) is explained. Specifically, **S5** is performed based on FIG. **10**. The blower voltage is a voltage applied to the blower motor **15** which is driven with power supplied from the battery. As shown in FIG. **10**, it is determined whether the setting of the air amount is auto (automatic) at **S61**. When the setting of the air amount is auto, the air-conditioner ECU **60** moves to **S62**. When the setting of the air amount is not auto, the air-conditioner ECU **60** moves to **S69**.

At **S62**, a temporary blower level f(TAO), which will serve as a base, is calculated from a map. The blower level at the eco-mode is set lower than the blower level at the non-eco-mode. Thereby, power consumption of the blower is reduced, and the rise in the temperature of the evaporator **7** becomes late at a cooling operation time. In contrast, at a heating operation time, because the decrease in the temperature of the cooling water of the engine becomes late, energy required by the air-conditioner **100** can be reduced.

At **S63**, a warm-up air amount f(Tw) is computed according to the water temperature of the heater core **34** and the PTC operation number of the electric heater **35**.

At **S64**, the air outlet mode is determined as the foot mode (FOOT), the bilevel mode (B/L), the foot defroster mode (F/D), or the other.

When the air outlet mode is determined as one of the foot mode (FOOT), the bilevel mode (B/L), and the foot defroster (F/D) mode, the air-conditioner ECU **60** progresses to **S65**.

At **S65**, it is determined which is larger between the minimum value of the temporary blower level f(TAO) and the warm-up air amount f(Tw), and the blower level is set by the larger one. At **S66**, the blower level selected at **S65** is converted into a blower voltage using a map.

When the air outlet mode is determined as the other at **S64**, for example when the air outlet mode is set only at the face mode (FACE), the air-conditioner ECU **60** progresses to **S67**. At **S67**, the temporary blower level f(TAO) is selected as a blower level. At **S68**, the selected blower level f(TAO) is converted into a blower voltage using a map.

When the setting of the air amount is manual at **S61**, voltage (from 4V to 12V) is applied to the blower motor **15** based on a map at **S69**.

Next, the air inlet mode determination process (**S6**) is explained based on FIG. **11**. As shown in FIG. **11**, at **S71**, it is determined whether the air inlet control is auto or not. When the air inlet control is auto, the air inlet switch control is performed according to the target blow off temperature TAO at **S73**. When the air inlet control is manual, the air inlet control is performed according to the manual setting at **S72**. That is, the outside air introduction rate is set as 0% at the time of inside air mode (REC), or is set as 100% at the time of outside air mode (FRS).

Next, the air outlet mode determination process (**S7**) is explained based on FIG. **12**. As shown in FIG. **12**, the air outlet mode is determined as one of the face mode (FACE), the bilevel mode (B/L) and the foot mode (FOOT) according to the target blow off temperature TAO.

Next, the compressor rotation number determination process (**S8**) is explained based on FIG. **13**. As shown in FIG. **13**, at **S91**, a temperature deviation En is calculated, using the following Expression 2, by subtracting an actual after-eva

13

temperature TE from a target after-eva temperature TEO computed using the detection signals of the sensors.

$$En = TEO - TE \quad (\text{Expression 2})$$

Then, a deviation variation rate EDOT is calculated, using the Expression 3, and a rotation number variation Δf of the compressor is calculated from a map example shown in FIG. 13. A value of En-1 represents a last time deviation value before a deviation En, and n is a natural number.

$$EDOT = En - En-1 \quad (\text{Expression 3})$$

The value of En is updated once per second, therefore the value of En-1 is a value one second ago relative to En.

The example map (example at the time of cooling operation) representing the relationship among the deviation En, the deviation variation rate EDOT and the rotation number variation Δf is shown in S91 of FIG. 13. An increase/decrease rotation number variation Δf is calculated relative to the one-second-before compressor rotation number fn-1 based on the map memorized in the ROM of the air-conditioner ECU 60 using En and EDOT.

Alternatively, the rotation number variation Δf calculated based on the deviation En and the deviation variation rate EDOT may be calculated through a fuzzy control based on a predetermined membership function and rule memorized in the ROM. Thus, the rotation number variation Δf is calculated every second for the compressor.

At S92, it is determined whether the eco-mode is set by turning on the eco-mode switch 710 of FIG. 6. When the eco-mode is not set at S92, the maximum rotation number MAX-f is set as 10000 rpm at S93. Then, at S95, it is determined whether the sum of the last rotation number LAST-f and the rotation number variation Δf is smaller than the maximum rotation number MAX-f (10000 rpm). The value of the smaller one is set as the present time compressor rotation number PRESENT-f.

When the eco-mode is set at S92, the maximum rotation number MAX-f is set as 7000 rpm at S96.

Then, at S95, it is determined whether the sum of the last rotation number LAST-f and the rotation number variation Δf is smaller than the maximum rotation number MAX-f (7000 rpm). The value of the smaller one is set as the present time compressor rotation number PRESENT-f.

The maximum rotation number MAX-f is set as 7000 rpm at the eco-mode, which is lower than 10000 rpm set at the non-eco-mode. In other words, the maximum rotation number is reduced in the eco-mode, so the power consumption of the compressor 41, 42, 43 can be reduced at the eco-mode.

Next, the PTC operation number determination process (S9) is explained based on FIG. 14. As shown in FIG. 14, at S101, it is determined whether the blower switch 705 (FIG. 5) is set ON. Specifically, it is determined that the blower switch 705 is ON when AUTO, LO, ME, or HI is set for the air amount by operating the blower switch 705, other than OFF. When it is determined that the blower switch 705 is ON at S101, the operation number of the electric heater 35 is computed based on the engine-cooling-water temperature Tw, at S102.

Specifically, as shown in the characteristics map of FIG. 14, when the engine-cooling-water temperature Tw is lower than 71° C., the operation number of the electric heater 35 is set into three. When the engine-cooling-water temperature Tw is higher than or equal to 71° C. and is lower than 74° C., the operation number of the electric heater 35 is set into two. When the engine-cooling-water temperature Tw is higher than or equal to 74° C. and is lower than 77° C., the operation number of the electric heater 35 is set into one. When the

14

engine-cooling-water temperature Tw is higher than or equal to 77° C., the operation number of the electric heater 35 is set into zero.

When it is determined that the blower switch 705 is OFF at S101, the electric heater 35 is set OFF (operation number is zero) at S103. After the operation number of the electric heater 35 is determined, the switch element SW1, SW2, SW3 of FIG. 2 is turned on or off based on the determination. Thus, the heat amount provided to air passing through the heater core 34 can be controlled by the operation number of the electric heater 35.

Next, the required water temperature determination process (S10) is explained based on FIG. 15. FIG. 15 is a flow chart explaining details of the required water temperature determination process of FIG. 4.

As shown in FIG. 15, at S111, an engine-off water temperature Toff and an engine-on water temperature Ton are calculated, which are determination threshold value used for determining an engine-on demand based on the engine-cooling-water temperature. The engine-off water temperature Toff is a threshold temperature for stopping the engine 50, and the engine-on water temperature Ton is a threshold temperature for activating the engine 50.

A reference engine-cooling-water temperature TwO is computed with the Expression 4.

$$TwO = \{(TAO - \Delta T_{pct}) - (TE \times 0.2)\} / 0.8 \quad (\text{Expression 4})$$

The engine-off water temperature Toff is set into smaller one between the reference engine-cooling-water temperature TwO and 70° C., as shown in the Expression 5.

$$Toff = \text{MIN}(TwO, 70) \quad (\text{Expression 5})$$

The engine-on water temperature Ton is set by subtracting a predetermined value such as 5° C. from the engine-off water temperature Toff, thereby restricting the engine 50 from frequently turning on/off.

In addition, the reference engine-cooling-water temperature TwO is an engine-cooling-water temperature needed when it is assumed that the warm air temperature before air mix becomes to agree with the target blow off temperature TAO. TE represents the after-eva temperature. ΔT_{pct} is an estimation value for an increase in the blow off temperature due to the electric heater 35, and is calculated on a map according to the operation number of the electric heater 35.

At S112, it is determined whether the engine-on demand is needed based on the engine-cooling-water temperature. At S112, the engine-on demand is determined temporarily. Specifically, the actual engine-cooling-water temperature Tw is compared with the engine-off water temperature Toff and the engine-on water temperature Ton calculated at S111. When the engine-cooling-water temperature is lower than the engine-on water temperature Ton, it is temporarily determined that the engine 50 is turned on as $f(Tw) = \text{ON}$. When the engine-cooling-water temperature is higher than the engine-off water temperature Toff, it is temporarily determined that the engine 50 is turned off as $f(Tw) = \text{OFF}$.

At S113, it is determined whether the seat heater 1012 (FIG. 3) of the seat air-conditioning device 101 is ON, which warms the seat for an occupant. When the seat heater 1012 is OFF at S113, f(SA) is calculated according to the solar amount SA at S114. When the seat heater 1012 is ON at S113, f(SA) is calculated according to the solar amount SA at S115, which is lower than f(SA) of S114.

At S116, f(OT) is selected between ON and OFF according to the value of f(SA) calculated at S114 or S115. OT means the outside air temperature. At the control start time, f(OT) is set as OFF at S116.

15

At S117, it is determined whether there is a final engine-on demand output from the air-conditioner ECU 60. When the eco-mode is set, if the target blow off temperature TAO is higher than or equal to 20° C., and if f(Tw)=ON, the engine 50 is usually allowed to be ON. However, the engine 50 is not allowed to be ON if f(OT)=OFF and if the preset temperature is less than 28° C., in this case.

Moreover, when the seat heater 1012 is ON at S113, the value of f(SA) is made smaller, because the occupant easily feels too hot. It is made difficult to allow the engine-on demand when the seat heater 1012 is ON, thus fuel consumption can be reduced while the minimum heating is achieved. Furthermore, the noise can be reduced outside of the vehicle, and the power charged in the battery can be effectively used. Moreover, as the solar amount is increased, the engine-on demand is made difficult to be allowed, because the occupant easily feels too hot. Therefore, the minimum heating, the fuel saving, the noise reduction and the effective use of the charged power can be achieved.

Next, the electric water pump operation determination process (S11) is explained based on FIG. 16. As shown in FIG. 16, at S121, it is determined whether the engine-cooling-water temperature Tw (water temperature) detected by the cooling-water-temperature sensor is higher than the after-eva temperature TE. When the water temperature Tw is determined to be lower than or equal to the after-eva temperature TE, the water pump 32 is determined to be OFF at S122, and S11 is ended.

While the engine-cooling-water temperature Tw detected by the cooling-water-temperature sensor is comparatively low and is lower than or equal to the after-eva temperature TE, if the engine cooling water is made to flow through the heater core 34, the blow off temperature will be lowered. Therefore, the electric water pump 32 is turned off at S122.

In contrast, when the water temperature Tw is determined to be higher than the after-eva temperature TE at S121, it is determined whether the blower 16 (FIG. 1) is ON or not at S123. If the blower 16 is not ON, the water pump 32 is turned OFF at S122, and S11 is ended. If the blower 16 is ON at S123, the water pump 32 is turned ON at S124, and S11 is ended.

That is, when the engine-cooling-water temperature Tw is comparatively high and when the blower 16 is OFF (stop), the electric water pump 32 is turned off to save the power. In contrast, when the blower 16 is ON, the electric water pump 32 is turned on. Thereby, the heat of the engine cooling water can be used for air-conditioning also when the engine 50 is off. Therefore, the blow off temperature can be raised to agree with the target blow off temperature TAO. Thus, the temperature in the passenger compartment can be restricted from lowering even when the engine 50 is off.

At S12 of FIG. 4, control signals are output to control the blower 16, the rotation speed of the compressor 41 through the inverter 42, the rotation speed of the outdoor fan 4, the air inlet switching door 13, the air outlet switching doors 21 and 22, the electric water pump 32, and the operation number of the heater wires (PTC) 351-353 of the electric heater 35. Moreover, the display operation in connection with the display 710a of the eco-mode switch 710 and the display 708a of the auto switch 708 are controlled at S12.

The auto switch 708 is provided in the operation panel 70 of FIG. 5. When the control is performed at the auto mode, the light emitting diode (LED) of the auto mode display 708a in the auto switch 708 emits light, so as to indicate that the operation is being performed with the auto mode (namely, an auto indicator corresponding to the auto mode display 708a lights up).

16

The eco-mode switch 710 of FIG. 6 which switches the mode between the eco-mode and the non-eco-mode is arranged in the passenger compartment. When the eco-mode is selected by operating the eco-mode switch 710 by the occupant, the light emitting diode in the eco-mode switch 710 lights up, so as to indicate that the operation is being performed with the eco-mode (namely, an eco-mode indicator corresponding to the eco-mode display 710a lights up).

According to the first embodiment, the seat air-conditioning device 101 which heats or cools the seat 1013 in the passenger compartment is operated with the manual mode or the auto mode. At the manual mode, the heating or cooling is controlled according to the value which is manually set. At the auto mode, the heating or cooling is controlled according to the automatically-set value (target blow off temperature TAO).

The air-conditioner ECU 60 automatically sets the auto mode for the seat air-conditioning device 101, when the eco-mode is set for the compressor 41 with the eco-mode switch 710. Therefore, the seat air-conditioning device 101 automatically operates with the auto mode in response to the eco-mode, in which the conditioning degree is lowered to save the power, however, the occupant can be restricted from feeling the shortage in the air-conditioning due to the operation of the seat air-conditioning device 101.

The seat air-conditioning device 101 has the seat heater 1012 and the seat cooler 1011. The seat heater 1011 controls the seat temperature in response to the eco-mode in which the target temperature is set slightly lower, however, the occupant is restricted from feeling cold due to the working of the seat heater 1011. Also when the cooling operation is conducted, the seat cooler 1011 restricts the occupant from feeling too hot.

The seat air-conditioning device 101 which heats or cools the seat 1013 in the passenger compartment is operated with the manual mode or the auto mode. When the eco-mode is set, the seat air-conditioning device 101 is set into the auto mode. Therefore, the air-conditioning can be backed-up by the seat air-conditioning device 101 at the eco-mode, more suitably for the environment of the passenger compartment.

Second Embodiment

A second embodiment will be described with reference to FIG. 17 in addition to FIGS. 1-16. In each subsequent embodiment, the same reference number is given to the same component as the first embodiment, and its explanation is omitted. Points and features different from the first embodiment will be described in details.

When the target temperature in the passenger compartment is lowered by setting the eco-mode by operating the eco-mode switch 710, and when the auto switch 708 of FIG. 5 is turned on, the seat air-conditioning device 101 is automatically operated with the seat auto mode. Thereby, the seat heater 1012 of the seat air-conditioning device 101 is turned on immediately at the moment when the auto mode is set. For this reason, the occupant is restricted from feeling cold.

In FIG. 3, the seat air-conditioning device 101 has the seat heater 1012 which warms the seat 1013 by electric heater. Further, the seat heater switch (seat SW) is provided in the seat air-conditioning panel 1015 which is operated to control the seat heater 1012. The seat air-conditioning device 101 operates with the seat manual mode or the seat auto mode. At the manual mode, the temperature of the seat 1013 is stepwise raised by manually operating the seat heater switch.

As shown in FIG. 17, the seat manual mode of the seat air-conditioning device 101 has the manual-OFF, the manual-

17

Lo, the manual-Me, and the manual-Hi, which are set in order of the temperature from low to high. The seat air-conditioning device **101** receives a signal of the target blow off temperature TAO from the air-conditioner ECU **60**.

When the seat air-conditioning device **101** is set in the seat auto mode by the seat auto switch of the seat air-conditioning panel **1015**, the temperature of the seat **1013** is changed according to the target blow off temperature TAO. When the seat heater **1012** operates with the seat auto mode, the mode is changed in order of the auto-OFF, the auto-Lo, the auto-Me, and the auto-Hi, which are set in order of the temperature from low to high.

In FIG. 17 illustrating the second embodiment, when the seat air-conditioning device **101** is set in the seat manual mode, the seat heater **1012** is changed in order of the manual-OFF, the manual-Lo, the manual-Me, and the manual-Hi by every operating the seat heater switch of the seat air-conditioning panel **1015**.

For example, at the time of the manual-OFF, while the eco-mode switch **710** of FIG. 6 is operated to change the air-conditioner **100** from the non-eco-mode to the eco-mode, the auto switch **708** of FIG. 5 may be turned ON. At this time, as shown in an arrow direction Y17 of FIG. 17, the operation of the seat air-conditioning device **101** is switched to the seat auto mode. In the seat auto mode, the control state is automatically shifted among the auto-OFF, the auto-Lo, the auto-Me, and the auto-Hi based on the target blow off temperature TAO.

While the seat air-conditioning device **101** is operated with the seat auto mode, if the seat heater switch (seat SW) is operated, the mode is shifted from the auto-OFF to the manual-Lo, from the auto-Lo to the manual-Me, from the auto-Me to the manual-Hi, or from the auto-Hi to the manual-OFF.

The shifting state at the seat auto mode is described. Every time when a signal is received from the air-conditioner ECU **60**, the mode is shifted automatically in order of the auto-OFF, the auto-Lo, the auto-Me, and the auto-Hi according to the target blow off temperature TAO, similarly to FIG. 8. The temperature of the seat heater **1012** becomes low in order of Hi, Me and Lo.

Left graph of FIG. 9 illustrates a relationship between the temperature of the seat heater **1012** (heater temperature) and ON or OFF of the seat heater **1012**, at the mode of auto-Hi and manual-Hi. The heater temperature represents a target temperature (° C.) of the seat heater **1012** at each mode.

Center graph of FIG. 9 illustrates a relationship between the temperature of the seat heater **1012** (heater temperature) and ON or OFF of the seat heater **1012**, at the mode of auto-Me and manual-Me.

Right graph of FIG. 9 illustrates a relationship between the temperature of the seat heater **1012** (heater temperature) and ON or OFF of the seat heater **1012**, at the mode of auto-Lo and manual-Lo.

When the air-conditioner **100** is switched from the non-eco-mode to the eco-mode to reduce the power of the compressor **41** by operating the eco-mode switch **710**, and when the auto mode is set for the operation of the air-conditioner **100** by turning on the auto switch **708**, the target temperature in the passenger compartment is set lower, and the auto mode is set for the operation of the air-conditioner **100**.

At the moment receiving a signal representing the change in the control of the air-conditioner **100**, as shown in FIG. 17, the seat air-conditioning device **101** is automatically set into the seat auto mode. As a result, the temperature of the seat heater **1012** is promptly and optimally controlled according

18

to the target blow off temperature TAO, as shown in FIG. 8. Therefore, the occupant can be restricted from feeling cold.

The above explanation is conducted as to the operation of the seat heater **1012** of the seat air-conditioning device **101**. The seat air-conditioning device **101** is further equipped with the seat cooler **1011** made of, for example, Peltier element, and the same control is possible also for the seat cooler **1011**. The air-conditioner **100** may be switched from the non-eco-mode to the eco-mode to reduce the power of the compressor **41** by operating the eco-mode switch **710** when the seat cooler **1011** is operated in summer. At the moment setting the eco-mode to increase the target temperature in the passenger compartment, the seat air-conditioning device **101** is set into the seat auto mode. As a result, the temperature of the seat cooler **1011** is promptly and optimally controlled according to the target blow off temperature TAO to cool the occupant, so the occupant can be restricted from feeling uncomfortable.

According to the second embodiment, the auto mode switch **708** is provided for setting the auto mode in which the temperature of the conditioned-air is automatically controlled by the air-conditioner ECU **60**. The seat air-conditioning device **101** is activated when the eco-mode is set and when there is a signal instructing the automatic control input from the auto mode switch **708**.

Therefore, the seat air-conditioning device **101** is automatically operated in response to the auto mode of the air-conditioner **100** even if the air-conditioning degree in the passenger compartment is lowered by setting the eco-mode. Thus, the occupant can be restricted from feeling the shortage in the air-conditioning.

Third Embodiment

A third embodiment will be described with reference to FIG. 18 in addition to FIGS. 1-16. In each subsequent embodiment, the same reference number is given to the same component as the first embodiment, and its explanation is omitted. Points and features different from the first embodiment will be described in details.

In the third embodiment, when the eco-mode is set for the air-conditioner **100**, and when the ignition switch **74** is turned on, the seat heater **1012** is turned ON at the moment. Alternatively, when the eco-mode is set for the air-conditioner **100**, and when a signal starting the air-conditioning is output from the blower switch **705** by turning on the blower switch **705**, the seat heater **1012** is turned ON at the moment. Thus, the occupant is restricted from feeling cold.

In FIG. 3, the seat air-conditioning device **101** has the seat heater **1012** which warms the seat **1013** by electric heater, and the seat heater switch (seat SW of FIG. 18) in the seat air-conditioning panel **1015** which controls the seat heater **1012**. The seat air-conditioning device **101** operates with the seat manual mode or the seat auto mode. At the manual mode, the temperature of the seat **1013** is stepwise raised by manually operating the seat heater switch.

The seat manual mode of the seat air-conditioning device **101** has the manual-OFF, the manual-Lo, the manual-Me, and the manual-Hi, which are set in order of the temperature from low to high. The seat air-conditioning device **101** receives a signal of the target blow off temperature TAO from the air-conditioner ECU **60**.

When the seat air-conditioning device **101** is set in the seat auto mode by the seat auto switch of the seat air-conditioning panel **1015**, the temperature of the seat **1013** is changed according to the target blow off temperature TAO. When the seat heater **1012** operates with the seat auto mode, the mode

19

is changed in order of the auto-OFF, the auto-Lo, the auto-Me, and the auto-Hi, which are set in order of the temperature from low to high.

In FIG. 18 illustrating the third embodiment, when the seat air-conditioning device **101** is set in the seat manual mode, the seat heater **1012** is changed in order of the manual-OFF, the manual-Lo, the manual-Me, and the manual-Hi by every operating the seat heater switch.

For example, at the time of the manual-OFF, if the eco-mode switch **710** of FIG. 6 is operated to change the air-conditioner **100** from the non-eco-mode to the eco-mode, and if the ignition switch **74** or the blower switch **705** is turned on, at the moment, as shown in an arrow direction **Y18** of FIG. 18, the operation of the seat air-conditioning device **101** is switched to the seat auto mode. In the seat auto mode, the control state is automatically shifted among the auto-OFF, the auto-Lo, the auto-Me, and the auto-Hi based on the target blow off temperature TAO.

While the seat air-conditioning device **101** is operated with the seat auto mode, if the seat heater switch (seat SW) is operated, the mode is shifted from the auto-OFF to the manual-Lo, from the auto-Lo to the manual-Me, from the auto-Me to the manual-Hi, or from the auto-Hi to the manual-OFF.

The shifting state at the seat auto mode is shown in FIG. 18. Every time when a signal is received from the air-conditioner ECU **60**, the mode is shifted automatically in order of the auto-OFF, the auto-Lo, the auto-Me, and the auto-Hi according to the target blow off temperature TAO. The temperature of the seat heater **1012** becomes low in order of Hi, Me and Lo.

Left graph of FIG. 9 illustrates a relationship between the temperature of the seat heater **1012** and ON or OFF of the seat heater **1012**, at the mode of auto-Hi and manual-Hi. The heater temperature represents a target temperature ($^{\circ}$ C.) of the seat heater **1012** at each mode.

Center graph of FIG. 9 illustrates a relationship between the temperature of the seat heater **1012** and ON or OFF of the seat heater **1012**, at the mode of auto-Me and manual-Me.

Right graph of FIG. 9 illustrates a relationship between the temperature of the seat heater **1012** and ON or OFF of the seat heater **1012**, at the mode of auto-Lo and manual-Lo.

When the vehicle is started by turning on the ignition switch **74**, or when the signal starting the air-conditioning is generated by turning on the blower switch **705**, the eco-mode may be set by operating the eco-mode switch **710** from the non-eco-mode. When the target temperature in the passenger compartment is made lower due to the eco-mode, as shown in FIG. 18, the seat air-conditioning device **101** is automatically set into the seat auto mode. As a result, the temperature of the seat heater **1012** is promptly and optimally controlled according to the target blow off temperature TAO, as shown in FIG. 8. Therefore, the occupant can be restricted from feeling cold.

The above explanation is conducted as to the operation of the seat heater **1012** of the seat air-conditioning device **101**. The seat air-conditioning device **101** is further equipped with the seat cooler **1011** made of, for example, Peltier element, and the same control is possible also for the seat cooler **1011**.

According to the third embodiment, the ignition switch **74** which generates the start signal of the vehicle, or the blower switch **705** which generates the start signal of the air-conditioning is provided. The seat air-conditioning device **101** may be automatically activated in response to the start signal of the vehicle or the start signal of the air-conditioning when the eco-mode is set.

Therefore, the seat air-conditioning device **101** is automatically operated in response to the turning on of the ignition

20

switch **74** or the blower switch **705** even if the air-conditioning degree in the passenger compartment is lowered due to the eco-mode. Because the seat air-conditioning device **101** is automatically operated, the occupant can be restricted from feeling the shortage in the air-conditioning.

The ignition switch **74** may correspond to an activation signal generator generating a first signal activating the vehicle. The blower switch **705** may correspond to an air-conditioning start signal generator generating a second signal starting the air-conditioning. The seat temperature control system is automatically activated in response to the first signal or the second signal when the eco-mode is set.

Fourth Embodiment

A fourth embodiment will be described with reference to FIG. 19 in addition to FIGS. 1-16. In each subsequent embodiment, the same reference number is given to the same component as the first embodiment, and its explanation is omitted. Points and features different from the first embodiment will be described in details.

In the fourth embodiment, if the eco-mode is set when the ignition switch is turned on, the seat air-conditioning is operated at the seat auto mode. In contrast, if the non-eco-mode is set when the ignition switch is turned on, the seat air-conditioning is not operated with the manual-OFF mode.

Specifically, in FIG. 19 illustrating the fourth embodiment, the seat heater is usually shifted stepwise in order of the manual-OFF, the manual-Lo, the manual-Me, and the manual-Hi, whenever the seat heater switch is operated. When the ignition switch **74** is turned ON from OFF at the eco-mode, the seat heater is shifted to the seat auto mode in which the mode is automatically changed among the auto-OFF, the auto-Lo, the auto-Me and the auto-Hi based on the target blow off temperature TAO. On the other hand, when the ignition switch is turned ON from OFF at the non-eco-mode, the seat heater is shifted to the manual-OFF mode.

Therefore, even when the target temperature in the passenger compartment is set lower due to the eco-mode, the occupant can be restricted from feeling cold because the seat heater is activated. Also at a cooling operation, the occupant can be restricted from feeling hot, because the seat cooler is activated.

Moreover, if the non-eco-mode is set when the ignition switch **74** is turned on, the seat air-conditioning is switched into the manual-OFF mode. Therefore, the setting of the seat air-conditioning continues to be the same as the previous mode (for example, the manual-Hi mode is continued) even when the ignition switch **74** is turned on, so the power consumption of the seat air-conditioning can be restricted from increasing.

Fifth Embodiment

A fifth embodiment will be described with reference to FIG. 20 in addition to FIGS. 1-16. In each subsequent embodiment, the same reference number is given to the same component as the first embodiment, and its explanation is omitted. Points and features different from the first embodiment will be described in details.

In FIG. 20 illustrating the fifth embodiment, the seat heater is usually shifted stepwise in order of the manual-OFF, the manual-Lo, the manual-Me, and the manual-Hi, whenever the seat heater switch is operated. When the ignition switch **74** is turned ON from OFF at the eco-mode, the seat heater is shifted to the seat auto mode in which the mode is automatically changed among the auto-OFF, the auto-Lo, the auto-Me

and the auto-Hi based on the target blow off temperature TAO. On the other hand, when the ignition switch is turned ON from OFF at the non-eco-mode, the seat heater is shifted to the manual-OFF mode.

Moreover, an air-conditioning (A/C) load determiner **102** of FIG. **20** determines whether the air-conditioning load of the air-conditioner is large or small based on the outside air temperature which is a temperature of air outside of the vehicle. When it is determined that the outside air temperature is low (when the air-conditioning load is small), the mode is shifted to the auto-OFF of the seat auto mode in FIG. **20**.

Therefore, even when the target temperature in the passenger compartment is set lower at the eco-mode, the occupant can be restricted from feeling cold because the seat heater is activated. Also at a cooling operation, the occupant can be restricted from feeling hot because the seat cooler is activated.

Moreover, if the non-eco-mode is set when the ignition switch **74** is turned on, the seat air-conditioning is switched into the manual-OFF mode. That is, when the ignition switch **74** is turned on, the setting of the seat air-conditioning continues to be the same as the previous mode (for example, the manual-Hi mode is continued), so the power consumption of the seat air-conditioning can be restricted from increasing.

That is, because the last-time manual setting status of the seat air-conditioning device is reset, the seat air-conditioning device is restricted from having useless operation, thus more power saving can be achieved. Furthermore, when it is determined that the air-conditioning load is small, the seat air-conditioning device is shifted into the auto-OFF mode of the seat auto mode. Thus, the seat air-conditioning device is restricted from having useless operation when the air-conditioning load is small.

Sixth Embodiment

A sixth embodiment will be described with reference to FIGS. **21-33**. As shown in FIGS. **21** and **23**, a seat conditioner **2102** is used for a hybrid car which has an engine **2010**, a motor **2011** (motor generator) and an engine electronic control unit (ECU) **2012**. The engine ECU **2012** controls startup and stop of the engine **2010**. The seat conditioner **2102** controls the temperature of the seat of the hybrid car to agree with a preset temperature. The hybrid car has an air-conditioner **2101** which air-conditions the inside of the passenger compartment.

The air-conditioner **2101** has an air conditioning unit **2100A** and an air-conditioner ECU **2180A**.

As shown in FIGS. **21-23**, the air conditioning unit **2100A** has an air conditioning duct **2110**, a blower **2120**, a refrigerating cycle **2130**, a cooling water circuit **2140**, an air mix door **2145**, an electric heater **2150**, an air-conditioner console (operation) panel **2160** and various sensors **2171**, **2172**, **2173**, **2174**, **2175**, **2176**.

The duct **2110** is arranged at a front side of the passenger compartment of the hybrid car. The most upstream side of the air conditioning duct **2110** serves as an inlet box switching to draw inside air or outside air, and the inlet box has an inside air inlet **2111** from which air (inside air) in the passenger compartment is drawn and an outside air inlet **2112** from which air (outside air) is drawn from outside the passenger compartment.

An air switching door **2113** is rotatably disposed at inner sides of the inlets **2111**, **2112**. The door **2113** is driven by an actuator such as servo motor, and changes the air inlet mode among an inside air circulation (REC) mode, a combine

(REC/FRS) mode, and an outside air introduction (FRS) mode. The actuator of the door **2113** is controlled by the air-conditioner ECU **2180A**.

The most downstream side of the air conditioning duct **2110** serves as a outlet box switching the outlet to output conditioned-air, and the outlet box has a defroster (DEF) opening, a face (FACE) opening, and a foot (FOOT) opening.

A defroster duct **2114** is connected to the DEF opening, and the most downstream end of the defroster duct **2114** has a defroster outlet **2114a** which blows off conditioned-air toward an inner surface of a front windshield **2114b** of the hybrid car. A face duct **2115** is connected to the FACE opening, and the most downstream end of the face duct **2115** has a face outlet **2115a** which blows off conditioned-air toward an upper body of an occupant. A foot duct **2116** is connected to the FOOT opening, and the most downstream end of the foot duct **2116** has a foot outlet **2116a** which blows off conditioned-air toward a foot of an occupant.

A first outlet switching door **2117** is rotatably mounted on the inner side of the outlets **2114a**, **2115a**, and a second outlet switching door **2118** is rotatably mounted on the inner side of the outlet **2116a**. The outlet switching door **2117**, **2118** is driven by an actuator such as servo motor, so as to change the air outlet mode among a face mode (FACE), a bilevel mode (B/L), a foot mode (FOOT), a foot defroster mode (F/D), and a defroster mode (DEF). The actuator of the outlet switching door **2117**, **2118** is controlled by the air-conditioner ECU **2180A**.

The blower **2120** is located at downstream of the inlet box, and has a centrifugal type fan **2121** and a blower motor **2122** driving to rotate the fan **2121**. The fan **2121** is rotatably accommodated in a scroll case integrated with the air conditioning duct **2110**. The blower motor **2122** is controlled by the air-conditioner ECU **2180A**. A blower air amount (rotating speed of the fan **2121**) is controlled based on a blower voltage impressed to a terminal of the motor **2122** through a blower drive circuit.

The refrigerating cycle **2130** has a refrigerant piping connecting a compressor **2131**, a condenser **2132**, a receiver **2133**, an expansion valve **2134**, and an evaporator **2135** in this order. The compressor **2131** compresses refrigerant, and the condenser **2132** condenses the compressed refrigerant. The receiver (gas liquid separator, liquid receiver) **2133** separates the condensed refrigerant into gas or liquid, and only liquid refrigerant can flow downward from the receiver **2133**. The expansion valve **2134** decompresses and expands the liquid refrigerant. The evaporator **2135** evaporates the decompressed and expanded refrigerant.

The compressor **2131** is an electrically-driven compressor driven by a motor **2131a**. A rotation speed of the motor **2131a** is controlled by an inverter **2131b**. The condenser **2132** is an outdoor heat exchanger which causes refrigerant flowing inside to exchange heat with outside air, for example, sent by a cooling fan **2132a**, and is placed to easily receive the running wind produced when the hybrid car travels. The evaporator **2135** is an indoor heat exchanger which cools and dehumidifies air (to be conditioned) passing inside, and is placed downstream of the blower **2120** to close the all passage of the air conditioning duct **2110**. The inverter **2131b** and the cooling fan **2132a** are controlled by the air-conditioner ECU **2180A**.

The cooling water circuit **2140** has a water pump **2142** which circulates the cooling water warmed by the water jacket of the engine **2010**, and has a radiator (not shown), a thermostat (not shown), and a heater core **2141**.

The cooling water (warmed water) of the engine **2010** flows inside of the heater core **2141** which is a heat exchanger

for heating air to be conditioned using the warmed cooling water as a heat source for heating. The heater core **2141** is placed downstream of the evaporator **2135** to close a part of the passage of the air conditioning duct **2110**. The heater core **2141** reheats the air cooled by the evaporator **2135**. The maximum heating capacity of the heater core **2141** is proportional to the temperature of the cooling water, and becomes higher as the temperature of the cooling water becomes higher. The water pump **2142** is an electric pump driven by a motor which is controlled by the air-conditioner ECU **2180A**.

The air mix door **2145** is rotatably arranged on the upstream side of the heater core **2141**, and is driven by an actuator such as servo motor. A ratio between the air amount which passes the heater core **2141** and the air amount which bypasses the heater core **2141** is adjusted by a stop position (opening SW) of the door **2145**. Thus, the blow off temperature of air blown off into the passenger compartment is adjusted. The opening SW of the door **2145** is controlled by the air-conditioner ECU **2180A** between 0% and 100%. The door **2145** completely closes the front face of the heater core **2141** when the opening SW of the door **2145** is 0%. The door **2145** completely closes the bypass passage opposite from the heater core **2141** when the opening SW of the door **2145** is 100%.

The electric heater **2150** is a supplementary heating equipment which heats the warmed air which passed the heater core **2141**, and is arranged at the downstream of the heater core **2141**. The electric heater **2150** may be made of a PTC heater, for example. As shown in FIG. 22, the electric heater **2150** has heater wires **2151**, **2152**, **2153** made of nichrome wire, for example, and the heater wires **2151**, **2152**, **2153** are connected in parallel with each other between a power source Ba and the ground. Switch elements SW1, SW2, SW3 are provided to the heater wires **2151**, **2152**, **2153**, respectively, and control the electricity supply to the heater wires **2151**, **2152**, **2153** from the power source Ba by being turned on or off by the air-conditioner ECU **2180A**.

The air-conditioner console panel **2160** is a panel having the following switches for operating the air conditioning unit **2100A** based on requirements of an occupant. An air-conditioner (A/C) switch is used for starting or stopping the compressor **2131** of the refrigerating cycle **2130**. An inlet mode switch is used for switching the air inlet mode. A temperature setting switch is used for setting the temperature in the passenger compartment. An air amount switch is used for changing the air amount (Off, Auto, Lo, Me, Hi) of the blower **2120**. An outlet mode switch is used for switching the air outlet mode. An eco-mode switch is used for choosing an eco-operation (eco-mode) of the air conditioning unit **2100A**. A switch signal inputted from each switch of the air-conditioner console panel **2160** is outputted to the air-conditioner ECU **2180A**.

An inside air temperature sensor **2171** outputs an inside air temperature signal equivalent to the air temperature (inside air temperature) in the passenger compartment. An outside air temperature sensor **2172** generates an outside air temperature signal equivalent to the air temperature (outside air temperature) outside of the passenger compartment. A solar sensor **2173** generates a solar amount signal equivalent to the solar amount irradiated to the passenger compartment. A refrigerant pressure sensor **2174** generates a pressure signal equivalent to the high pressure side pressure of the refrigerating cycle **2130**. An after-evaporator temperature sensor **2175** generates an after-evaporator temperature signal equivalent to the air temperature downstream of the evaporator **2135**. A water temperature sensor **2176** generates a cooling-water-temperature signal equivalent to the temperature of the cool-

ing water which flows into the heater core **2141**. A sensor signal generated by the sensor **2171-2176** is outputted to the air-conditioner ECU **2180A**.

The air-conditioner ECU **2180A** is mainly constructed of a microcomputer having a CPU, a ROM and a RAM (which are not shown). As shown in FIG. 23, the switch signal outputted from the air-conditioner console panel **2160**, and the sensor signal outputted from the sensors **2171-2176** are A/D converted by an input circuit (not shown) of the air-conditioner ECU **2180A**, and are inputted into the microcomputer. The air-conditioner ECU **2180A** controls the operation of the air conditioning unit **2100A** based on the A/D converted signals, and outputs an engine-on-demand signal to the engine ECU **2012** of the engine **2010**. The air-conditioner ECU **2180A** is energized by a direct current power supplied from a battery when the ignition switch of the hybrid car is turned on.

Next, the seat conditioner **2102** will be explained. As shown in FIG. 1, the seat conditioner **2102** has a seat conditioning unit **2100B** and a seat ECU **2180B**.

The seat conditioning unit **2100B** is an air-conditioner which blows off warmed air or cooled air toward an occupant from plural pores formed on the bottom surface and the back-rest surface of the seat. The seat conditioning unit **2100B** has a seat blower (not shown), a Peltier element (not shown), and a seat conditioning switch **2191**. The Peltier element heats or cools air sent from the seat blower. The seat conditioning switch **2191** is operated by an occupant to switch the operation of the seat conditioning unit **2100B** between heating and cooling, to change the heating level (Lo, Me, Hi), and to change the cooling level (Lo, Me, Hi). The seat conditioning switch **2191** is located in or adjacent to the air-conditioner console panel **2160**.

The seat ECU **2180B** may correspond to a controller, and has a microcomputer (not shown) with CPU, ROM, RAM, etc., similarly to the air-conditioner ECU **2180A**. As shown in FIG. 23, a seat switch signal outputted from the seat conditioning switch **2191** is A/D converted by an input circuit (not shown) in the seat ECU **2180B**, and is inputted into the microcomputer. The seat ECU **2180B** controls the operation of the seat conditioning unit **2100B** based on the A/D converted seat switch signal.

Specifically, the seat ECU **2180B** changes the polarity of the voltage impressed to the Peltier element of the seat conditioning unit **2100B** based on the seat switch signal so as to switch the operation between heating and cooling. Furthermore, the seat ECU **2180B** adjusts the voltage level impressed to the Peltier element so as to adjust the heating amount or the heat-absorbing amount. The seat ECU **2180B** is supplied with direct current power from a battery when the ignition switch of the hybrid car is turned on.

The air-conditioner ECU **2180A** and the seat ECU **2180B** are mutually connected by a communication portion, therefore various signals and computed results can be transmitted between the ECU **2180A** and the ECU **2180B**.

A control process conducted by the ECU **2180A** will be described with reference to FIGS. 24-33. FIG. 24 is a flow chart which shows the fundamental control process executed by the air-conditioner ECU **2180A**, and FIGS. 25-33 show subroutines illustrating details in each process of FIG. 24.

When the ignition switch is turned on to supply direct current power to the air-conditioner ECU **2180A**, the routine of FIG. 24 (FIGS. 25-33) is started, and the air-conditioner ECU **2180A** performs initialization and initial setting at S2001.

25

At **S2002**, a switch signal input from each switch of the consol panel **2160** is read. Then, sensor signals obtained from the sensors **2171-2176** are read as the A/D converted signals at **S2003**.

When the ignition switch is turned on, direct current power is supplied also to the seat ECU **2180B**, and the control of the seat conditioning unit **2100B** is started based on the seat switch signal from the seat conditioning switch **2191**.

At **S2004**, a target blow off temperature TAO is calculated by using the following Expression 1 memorized in the ROM. The target temperature TAO is used as a target temperature of air blown into the passenger compartment.

$$TAO = Kset \times Tset - Kr \times Tr - Kam \times Tam - Ks \times Ts + C \quad (\text{Expression 1})$$

Here, Tset represents the preset temperature set with the temperature setting switch. Tr represents the inside air temperature detected by the inside air temperature sensor **2171**. Tam represents the outside air temperature detected by the outside air temperature sensor **2172**. Ts represents the solar amount detected by the solar sensor **2173**. Values of Kset, Kr, Kam and Ks are gains, and a value of C is a correcting constant for the whole of Expression 1.

Then, at **S2005**, the voltage (air amount) of the blower **2120** is determined. The blower voltage determination is carried out based on the subroutine (**S2051-S2058**) of FIG. 25.

At **S2051**, it is determined whether the setting of the air amount is auto (automatic). When the setting of the air amount is auto, a temporary blower level f(TAO), which will serve as a base, is calculated from a map memorized in the ROM at **S2052**. Here, the blower level f(TAO) is set higher on a lower side and a higher side in the target blow off temperature TAO, and is set lower in a middle range of the target blow off temperature TAO. The blower level f(TAO) at the eco-mode is set lower than the blower level f(TAO) at the non-eco-mode. Thereby, power consumption of the blower is reduced, and the rise in the temperature of the evaporator **2135** becomes late at a cooling operation time. In contrast, at a heating operation time, the decrease in the temperature of the cooling water of the engine becomes late, so energy required by the air-conditioner **2101** can be reduced.

At **S2053**, a warm-up air amount f(TW) is computed according to the water temperature TW of the heater core **2141**, and the PTC operation number of the electric heater **2150** (see **S2011** of FIG. 30).

At **S2054**, the air outlet mode is determined as the foot mode (FOOT), the bilevel mode (B/L), the foot defroster mode (F/D) or the other.

When the air outlet mode is determined as one of the foot mode, the bilevel mode, and the foot defroster mode at **S2054**, it is determined which is larger between the minimum value of the blower level f(TAO) and the warm-up air amount f(TW), and the larger one is selected as the blower level at **S2055**. The blower level selected at **S2055** is converted into a blower voltage using a map at **S2056**.

When the air outlet mode is determined as the other at **S2054**, for example when the air outlet mode is set only at the face mode (FACE), the blower level f(TAO) is selected as a blower level at **S2057**.

At **S2058**, the selected blower level f(TAO) is converted into a blower voltage using a map memorized in the ROM.

When the setting of the air amount is manual at **S2051**, voltage (from 4V to 12V) is applied to the blower based on a map at **S2059**.

Next, at **S2006**, the air inlet mode is determined based on the target blow off temperature TAO in an inlet mode determination with reference to **S2061-S2063** of FIG. 26.

26

At **S2061**, it is determined whether the air inlet control is auto or not. When the air inlet control is auto, the air inlet switch control is performed according to the target blow off temperature TAO at **S2062**. As the target blow off temperature TAO is changed from low to high, the air inlet mode is switched in order of the REC mode, the REC/FRS mode and the FRS mode.

When the air inlet control is manual, the air inlet control is performed according to the manual setting at **S2063**. That is, the outside air introduction rate is set as 0% at the time of inside air mode (REC), or is set as 100% at the time of outside air mode (FRS).

Next, at **S2007**, the air outlet mode is determined, as shown in FIG. 27, based on the target blow off temperature TAO. As the target blow off temperature TAO is changed from low to high, the air outlet mode is set in order of the face mode, the bilevel mode, and the foot mode in accordance with the map.

Next, at **S2008**, the opening SW of the air mixi door **2145** is determined based on the following Expression 2 memorized in the ROM.

$$\text{opening SW} = (TAO - TE) / (TW - TE) \times 100(\%) \quad (\text{Expression 2})$$

Here, the target blow off temperature TAO is computed at **S2004**. The after-evaporator temperature TE is obtained from the after-evaporator temperature sensor **2175**. The cooling water temperature TW is obtained from the water temperature sensor **2176**.

Next, at **S2009**, the target after-evaporator temperature TEO is determined, as shown in FIG. 28, based on the target blow off temperature TAO. As the target blow off temperature TAO is changed from low (4° C.) to high (12° C.), the target after-evaporator temperature TEO is raised from low (2° C.) to high (10° C.).

Next, at **S2010**, the rotation speed of the compressor **2131** (motor **2131a**) is determined based on the subroutine (**S2101-S2105**) shown in FIG. 29.

At **S2101**, a temperature deviation En is calculated, using the following Expression 3, by subtracting an actual after-evaporator temperature TE from the target after-evaporator temperature TEO computed at **S2009**. A deviation variation rate EDOT is calculated using the following Expression 4.

$$En = TEO - TE \quad (\text{Expression 3})$$

$$EDOT = En - En-1 \quad (\text{Expression 4})$$

The value of En is updated once per second, therefore the value of En-1 is a value one second ago relative to En.

The example map (example at the time of cooling operation) representing the relationship among the deviation En, the deviation variation rate EDOT and the rotation number variation Δf of the compressor **2131** is shown in **S2101** of FIG. 29. The rotation number variation Δf is calculated based on the map using the temperature deviation En and the deviation variation rate EDOT. One-second-later (present) compressor rotation number f is calculated by adding the rotation number variation Δf to one-second-before compressor rotation number f_{n-1} (f = f_{n-1} + Δf).

Alternatively, the rotation number variation Δf calculated based on the deviation En and the deviation variation rate EDOT may be calculated through a fuzzy control based on a predetermined membership function and rule memorized in the ROM.

Next, it is determined whether the eco-mode switch is turned on at **S2102** to set the eco-mode. When the eco-mode is not set at **S2102**, the maximum rotation number MAX-f is set as 10000 rpm at **S2103**. When the eco-mode is set at **S2102**, the maximum rotation number MAX-f is set as 7000 rpm at **S2104**.

At **S2105**, it is determined whether the sum of the last rotation number LAST-f and the rotation number variation Δf is smaller than the maximum rotation number MAX-f (10000 rpm or 7000 rpm) set at **S2103** or **S2104**. The value of the smaller one is set as the present time compressor rotation number PRESENT-f.

The maximum rotation number is set as 7000 rpm at the eco-mode which is lower than 10000 rpm at the non-eco-mode. Thus, the maximum rotation number is reduced in the eco-mode to save the power consumption in the compressor **2131**.

Next, at **S2011**, the operation number of the PTC heater (heater wires **2151-2153**) of the electric heater **2150** is determined based on the subroutine (**S2111-S2113**) of FIG. 30.

At **S2111**, it is determined whether the blower switch is ON. Specifically, it is determined that the blower switch **705** is ON when AUTO, LO, ME, or HI is set for the air amount, other than OFF. When it is determined that the blower switch is ON at **S2111**, the operation number of the electric heater **2150** is computed based on the engine-cooling-water temperature T_w detected by the sensor **2176**, at **S2112**, using a map memorized in the ROM. As the cooling water temperature T_w is changed from low to high, the operation number of the electric heater **2150** is decreased (from three to one).

When it is determined that the blower switch is OFF at **S2111**, the electric heater **2150** is set OFF (operation number is zero) at **S2113**.

After the operation number of the electric heater **2150** is determined, the switch element SW1, SW2, SW3 of FIG. 22 is turned on or off based on the determination. Thus, the heat amount provided to air passing through the heater core **2141** can be controlled by the operation number of the electric heater **2150**.

Next, the required water temperature determination process (**S2012**) is explained with reference to the subroutine (**S2121-S2127**) of FIG. 31. The required temperature of the engine cooling water is determined based on the target blow off temperature TAO etc. in order to use the engine cooling water as a heat source for heating and defrosting.

At **S2121**, an engine-off water temperature Toff and an engine-on water temperature Ton are calculated, which are determination threshold value used for determining an engine-on demand based on the engine-cooling-water temperature T_w . The engine-off water temperature Toff is a threshold temperature for stopping the engine **2010**, and the engine-on water temperature Ton is a threshold temperature for activating the engine **2010**.

A reference engine-cooling-water temperature TwO is computed with the following Expression 5. The engine-off water temperature Toff is set into smaller one between the reference engine-cooling-water temperature TwO and 70° C., as shown in the following Expression 6.

$$TwO = \{(TAO - \Delta T_{ptc}) - (TE \times 0.2)\} / 0.8 \quad (\text{Expression 5})$$

$$Toff = \text{MIN}(TwO, 70) \quad (\text{Expression 6})$$

The reference engine-cooling-water temperature TwO is an engine-cooling-water temperature T_w needed when it is assumed that the warm air temperature before air mix becomes to agree with the target blow off temperature TAO. TE represents the after-evaporator temperature. ΔT_{ptc} is an estimation value for an increase in the blow off temperature due to the electric heater **2150**, and is calculated on a map according to the operation number of the electric heater **2150**.

The engine-on water temperature Ton is set by subtracting a predetermined value such as 5° C. from the engine-off water

temperature Toff, thereby restricting the engine **2010** from frequently turning on/off, as shown in the following Expression 7.

$$Ton = Toff - 5 \quad (\text{Expression 7})$$

Next, at **S2122**, it is determined whether the engine-on demand is needed based on the engine-cooling-water temperature T_w . At **S2122**, the engine-on demand is determined temporarily. Specifically, the actual engine-cooling-water temperature T_w is compared with the engine-off water temperature Toff and the engine-on water temperature Ton calculated at **S2121**. When the engine-cooling-water temperature is lower than the engine-on water temperature Ton, it is temporarily determined that the engine **2010** is turned on as $f(T_w) = \text{ON}$. When the engine-cooling-water temperature is higher than the engine-off water temperature Toff, it is temporarily determined that the engine **2010** is turned off as $f(T_w) = \text{OFF}$.

At **S2123**, it is determined whether the seat conditioning device **2102** is ON, which warms the seat for an occupant. When the seat conditioning device **2102** is OFF at **S2123**, $f(SA)$ is calculated according to the solar amount SA at **S2124**. When the seat conditioning device **2102** is ON at **S2123**, $f(SA)$ is calculated at **S2125**, which is lower than $f(SA)$ at **S2124**.

At **S2126**, $f(OT)$ is selected between ON and OFF according to the value of $f(SA)$ calculated at **S2124** or **S2125**. OT means the outside air temperature. At the control start time, $f(OT)$ is set as OFF at **S2126**.

At **S2127**, it is determined whether there is a final engine-on demand relative to the engine **2010**. When the eco-mode is not set, if the target blow off temperature TAO is higher than or equal to 20° C., and if $f(TW) = \text{ON}$, the engine **2010** is usually allowed to be ON. However, the engine **2010** is not allowed to be ON in the other case.

When the eco-mode is set, if the target blow off temperature TAO is higher than or equal to 20° C., if $f(TW) = \text{ON}$, if the preset temperature Tset is less than 28° C., and if $f(OT) = \text{ON}$, the engine-on demand is output. Further, if the target blow off temperature TAO is higher than or equal to 20° C., if $f(TW) = \text{ON}$, and if the preset temperature Tset is higher than or equal to 28° C., the engine-on demand is output. However, the engine-on demand is not output in the other case.

When the seat heater **2102** is ON at **S2123**, the value of $f(SA)$ is made smaller, because the occupant easily feels too hot. It is made difficult to allow the engine-on demand when the seat heater **2102** is ON, thus fuel consumption can be reduced while the minimum heating is achieved. Furthermore, the noise can be reduced outside of the vehicle, and the power charged in the battery can be effectively used. Moreover, as the solar amount is increased, the engine-on demand is made difficult to be allowed, because the occupant easily feels too hot. Therefore, the minimum heating, the fuel saving, the noise reduction and the effective use of the charged power can be achieved.

Next, at **S2013**, the operation (on or off) of the water pump **2142** is determined based on, for example, the cooling water temperature T_w , with reference to the subroutine (**S2131-S2134**) shown in FIG. 32.

At **S2131**, it is determined whether the engine-cooling-water temperature T_w (water temperature) is higher than the after-evaporator temperature TE. When the water temperature T_w is determined to be higher than the evaporator temperature TE at **S2131**, the blower **2120** is determined to be ON (operating) or not at **S2132**. If the blower **2120** is determined to be ON, a pump-on demand is output at **S2133**. In contrast, when the water temperature T_w is determined to be lower than

or equal to the after-evaporator temperature TE at S2131, or when the blower 2120 is determined to OFF at S2132, a pump-off demand is output at S2134.

While the engine-cooling-water temperature Tw is comparatively low and is lower than or equal to the after-evaporator temperature TE, if the engine cooling water is made to flow through the heater core 2141, the blow off temperature will be lowered. Therefore, the electric water pump 2142 is turned off at S2134.

When the engine-cooling-water temperature Tw is comparatively high and when the blower 2120 is OFF, the water pump 2142 is turned off to save the power. In contrast, when the blower 2120 is ON, the water pump 2142 is turned on. Thereby, the heat of the engine cooling water can be used for air-conditioning also when the engine 2010 is off. Therefore, the blow off temperature can be raised to agree with the target blow off temperature TAO. Thus, the temperature in the passenger compartment can be restricted from lowering even when the engine 2010 is off.

At S2014, control signals are output to obtain the set situation determined or calculated at S2004-S2013. Then, at S2015, when a predetermined time T elapses, S2002 is restarted.

As mentioned above, the air-conditioner ECU 2180A controls the air conditioning unit 2100A. Meanwhile, the seat ECU 2180B conducts the seat conditioning control relative to the seat conditioning unit 2100B while the automatic temperature control is performed for air in the passenger compartment. The control process of the seat conditioning unit 2100B is explained based on the flow chart (S2161-S2163) shown in FIG. 33.

The seat ECU 2180B starts the seat conditioning control by receiving a seat switch signal from the seat conditioning switch 2191. First, at S2161, a correction value α is determined (calculated) to correspond to the elapsed time (minute) from the timing of activating (starting) the seat conditioning unit 2100B based on the map memorized in the ROM.

The correction value α is set to become larger as the elapsed time becomes longer. Moreover, the correction value α is set to become smaller, as an initial inside air temperature Tr (initial temperature INITIAL-Tr in the passenger compartment at the start timing of air-conditioning) is lower when the seat conditioning unit 2100B is activated. That is, as the inside air temperature Tr is lower, the elapsed time required for having the same correction value α is made longer.

For example, as shown in the map of S2161, if the initial inside air temperature INITIAL-Tr is higher than or equal to 10° C., which is represented by a solid line, the correction value α is set as 0 in the elapsed time of 0-5 minutes, and is increased to 20 in the elapsed time of 5-10 minutes. Further, the correction value α is increased to 40 in the elapsed time of 10-20 minutes, and is made constant as 40 in the elapsed time of 20-35 minutes.

If the initial inside air temperature INITIAL-Tr is lower than 10° C., which is represented by a dashed line in the map of S2161, the correction value α is set as 0 in the elapsed time of 0-10 minutes, and is increased to 20 in the elapsed time of 10-15 minutes. Further, the correction value α is increased to 40 in the elapsed time of 15-25 minutes, and is made constant as 40 in the elapsed time of 25-35 minutes.

Next, at S2162, the seat temperature conditioning degree is determined among auto-Hi, auto-Me, auto-Lo and auto-OFF to correspond to a value of the target blow off temperature TAO which is corrected by adding the correction value α (see a difference between FIG. 8 and FIG. 33). The seat temperature conditioning degree may correspond to OFF, Lo, Me, and

Hi in the heating level or OFF, Lo, Me, and Hi in the cooling level, for example. Here, explanation is provided in the case of the heating operation.

Basically, the heating level is determined in order of OFF, Lo, Me, and Hi, as the target blow off temperature TAO becomes larger. Here, for example, the target blow off temperature TAO is corrected by adding the correction value α for setting the auto-Me and the auto-Hi in the heating level. That is, because the correction value α is set larger as the elapsed time becomes longer, as shown in S2161, the target blow off temperature TAO corresponding to each heating level (Me, Hi) becomes larger. Therefore, the characteristics lines in the map of S2162 is shaped to move rightward substantially with the elapsed time. In other words, the heating level is set on the lower level under the situation having the same target blow off temperature TAO.

Next, the voltage impressed to the Peltier element is controlled so that the Peltier element obtains the heating degree (temperature) according to the set-up heating level (Hi, Me, Lo) at S2163. For example, in a case where the heating level is set at Hi, the voltage is impressed (ON) until the heating temperature of the Peltier element is raised to 47.5° C. Further, the voltage is not impressed (OFF) until the heating temperature of the Peltier element is lowered to 47° C., so the heating temperature can be obtained according to the Hi mode. Also in the Me or Lo mode, similar controlling is performed as the case of the Hi mode (refer to map in S2163).

According to the sixth embodiment, when the air-conditioner 2101 conducts the automatic temperature control for the passenger compartment, the seat conditioner 2102 lowers the conditioning degree (such as heating level in a heating operation time) of the seat conditioning unit 2100B with time elapsed (over time) from the operation start timing of the seat conditioner 2102.

Therefore, even when the outside air temperature is very low or very high, the seat ECU 2180B restricts the conditioning degree of the seat temperature from being maintained for a long time at the initial-setting value. Thus, too much heating or cooling can be restricted so as to continuously maintain comfortableness for an occupant.

Conventionally, when the outside air temperature is very low (or very high), in the initial stage after the seat conditioner 2102 is activated, the target blow off temperature TAO is set to very high value (or low value). The target blow off temperature TAO may be maintained as the very high value (or low value) for a long time. After the air-conditioning becomes sufficient in the passenger compartment by the air-conditioner 2101, if the conditioning degree of the seat temperature is maintained, the seat becomes too hot or too cold. In contrast, according to the sixth embodiment, the seat can be made comfortable by reducing the conditioning degree of the seat temperature over time elapsed after the seat conditioning is started.

Moreover, the seat ECU 2180B computes the conditioning degree of the seat temperature according to the target blow off temperature TAO which is computed based on the air-conditioning environmental condition. The target blow off temperature TAO is calculated based on the preset temperature Tset, the inside air temperature Tr, the outside air temperature Tam, and the solar amount Ts. Therefore, the occupant can feel comfortable at the time of starting the seat conditioning, because the conditioning degree of the seat temperature is computed based on the target blow off temperature TAO.

Moreover, the conditioning degree of the seat temperature is reduced by using the correction value α . The seat ECU 2180B delays the reduction in the conditioning degree of the seat temperature, as the initial inside air temperature INI-

31

TIAL- T_r is lower in the heating operation (as the initial inside air temperature INITIAL- T_r is higher in the cooling operation).

Therefore, the time period necessary for maintaining the conditioning degree of the seat temperature is determined based on the inside air temperature INITIAL- T_r at the early stage of the air-conditioning. Thus, the timing, at which an occupant feels that the seat conditioning is enough, can be accurately controlled.

Other Embodiment

The present disclosure is not limited to the above embodiments. For example, the present disclosure may be applied to an air-conditioner using a heat pump cycle, instead of the air-conditioner using the air-conditioner cycle (cooler cycle).

The compressor is not limited to the electrically-driven compressor, and the vehicle may be a gasoline car, an electric motorcar (EV), etc. instead of the hybrid car.

The seat conditioner device may be equipped with not both the seat heater and the seat cooler. The seat heater and the seat cooler may be provided with a single equipment, or may be provided with separate equipments, respectively. Furthermore, the seat conditioner device may have only the seat heater or the seat cooler. Moreover, the seat conditioning ECU may be incorporated into the air-conditioner ECU.

The seat conditioner device heats or cools the seat itself. Alternatively, the seat conditioner device may indirectly control the temperature of the seat by blowing off conditioned-air from the other part of the vehicle adjacent to the seat. The seat temperature control system may be defined to include such equipment and the seat conditioner device.

In the above embodiments, the eco-mode is set by operating the eco-mode switch. Alternatively, the eco-mode may be automatically set based on the remaining fuel amount or the state of the battery in which the remaining electric-power is small for driving the electric car.

The eco-mode is an energy-saving mode in which the air-conditioning degree is lowered, and is not limited to a mode in which the power of the compressor is saved. For example, the blower air amount or the flow rate of water flowing through the inside of the heater core may be reduced at the eco-mode instead of the power of the compressor.

The ignition switch may be a start-up switch or a starter switch starting the electric car which has no ignition device.

The seat conditioner may conduct the seat conditioning control for a cooling operation instead of the heating operation.

The air-conditioner is equipped with the air-conditioner ECU, and the seat conditioner is equipped with the seat ECU. Alternatively, the air-conditioner ECU and the seat ECU may be integrated into one ECU. In this case, the flow chart of FIG. 33 is inserted between S2013 and S2014 of FIG. 24.

The air-conditioner and the seat conditioner are not limited to be applied to the hybrid car. Alternatively, the air-conditioner and the seat conditioner may be applied to an idle stop vehicle which is equipped with only an engine to be suspended at an idle stop time.

Such changes and modifications are to be understood as being within the scope of the present disclosure as defined by the appended claims.

What is claimed is:

1. An air-conditioner that conducts an air-conditioning for a passenger compartment of a vehicle, the air-conditioning having an eco-mode to save energy, the air-conditioner comprising:

32

a seat temperature control system configured to heat or cool a seat in the passenger compartment; and
a controller that automatically activates the seat temperature control system when the eco-mode is set; wherein the seat temperature control system has

a seat manual mode in which the seat is heated or cooled based on a manually set value, and
a seat auto mode in which the seat is heated or cooled based on an automatically set value,

the controller automatically activates the seat temperature control system with the seat auto mode when the eco-mode is set;

the controller automatically activates the seat temperature control system with the seat auto mode when the eco-mode is set at a timing when the vehicle is activated, and the controller prohibits the seat temperature control system from activating when a non-eco-mode other than the eco-mode is set at the timing when the vehicle is activated.

2. The air-conditioner according to claim 1, wherein the seat temperature control system includes
a seat conditioner device heating or cooling the seat in the passenger compartment, and
an eco-mode switch through which the eco-mode is set, and

the controller automatically activates the seat conditioner device when the eco-mode is set by the eco-mode switch.

3. The air-conditioner according to claim 1, wherein the air-conditioning further has an auto mode in which a temperature of conditioned-air is automatically controlled, and

the controller automatically activates the seat temperature control system when the eco-mode is set and when the auto mode is set.

4. The air-conditioner according to claim 3, wherein the seat temperature control system includes an auto mode switch through which the auto mode is set, and the controller automatically activates the seat temperature control system when the eco-mode is set and when the auto mode is set through the auto mode switch.

5. The air-conditioner according to claim 1, wherein the seat temperature control system further includes
an activation signal generator generating a first signal activating the vehicle, and
an air-conditioning start signal generator generating a second signal starting the air-conditioning, and

the controller automatically activates the seat temperature control system in response to the first signal or the second signal when the eco-mode is set.

6. The air-conditioner according to claim 1, wherein the seat temperature control system has a seat cooler and a seat heater.

7. An air-conditioner that conducts an air-conditioning for a passenger compartment of a vehicle, the air-conditioning having an eco-mode to save energy, the air-conditioner comprising:

a seat temperature control system configured to heat or cool a seat in the passenger compartment; and
a controller that automatically activates the seat temperature control system when the eco-mode is set; wherein the seat temperature control system has
a seat manual mode in which the seat is heated or cooled based on a manually set value, and
a seat auto mode in which the seat is heated or cooled based on an automatically set value,

33

the controller automatically activates the seat temperature control system with the seat auto mode when the eco-mode is set;

the seat temperature control system further has a load determiner determining a load of the air-conditioning, the controller automatically activates the seat temperature control system with the seat auto mode when the eco-mode is set at a timing when the vehicle is activated, and the controller prohibits the seat temperature control system from activating when a non-eco-mode other than the eco-mode is set and when the load is smaller than a predetermined value at the timing when the vehicle is activated.

8. The air-conditioner according to claim 7, wherein the load determiner determines the load of the air-conditioning based on a temperature of air outside of the vehicle.

9. The air-conditioner according to claim 1 is applied to an electric car which is driven only by a motor.

10. The air-conditioner according to claim 7, wherein the seat temperature control system includes a seat conditioner device heating or cooling the seat in the passenger compartment, and an eco-mode switch through which the eco-mode is set, and the controller automatically activates the seat conditioner device when the eco-mode is set by the eco-mode switch.

34

11. The air-conditioner according to claim 7, wherein the air-conditioning further has an auto mode in which a temperature of conditioned-air is automatically controlled, and the controller automatically activates the seat temperature control system when the eco-mode is set and when the auto mode is set.

12. The air-conditioner according to claim 7, wherein the seat temperature control system includes an auto mode switch through which the auto mode is set, and the controller automatically activates the seat temperature control system when the eco-mode is set and when the auto mode is set through the auto mode switch.

13. The air-conditioner according to claim 7, wherein the seat temperature control system further includes an activation signal generator generating a first signal activating the vehicle, and an air-conditioning start signal generator generating a second signal starting the air-conditioning, and the controller automatically activates the seat temperature control system in response to the first signal or the second signal when the eco-mode is set.

14. The air-conditioner according to claim 7, wherein the seat temperature control system has a seat cooler and a seat heater.

15. The air-conditioner according to claim 7 is applied to an electric car which is driven only by a motor.

* * * * *